

Active Recombinant Human PDCD1 protein, Fc/Avi-tagged, Biotinylated

Cat. No. PDCD1-057H **Lot. No.** (See product label)

SPECIFICATION

| | |
|-------------------------|---|
| Product Overview | Biotinylated Recombinant Human PDCD1(Leu25-Thr168) protein, fused to Fc/Avi tag at the C-terminus, was expressed in CHO cells . |
| Species | Human |
| Source | CHO |
| ProteinLength | Leu25-Thr168 |
| Description | <p>Programmed Death-1 receptor (PDCD1), also known as CD279, is type I transmembrane protein belonging to the CD28 family of immune regulatory receptors (1). Other members of this family include CD28, CTLA-4, ICOS, and BTLA (2-5). Mature mouse PDCD1 consists of a 149 amino acid (aa) extracellular region (ECD) with one immunoglobulin-like V-type domain, a 21 aa transmembrane domain, and a 98 aa cytoplasmic region. The mouse PDCD1 ECD shares 65% aa sequence identity with the human PD-1 ECD. The cytoplasmic tail contains two tyrosine residues that form the immunoreceptor tyrosine-based inhibitory motif (ITIM) and immunoreceptor tyrosine-based switch motif (ITSM) that are important for mediating PDCD1 signaling. PDCD1 acts as a monomeric receptor and interacts in a 1:1 stoichiometric ratio with its ligands PD-L1 (B7-H1) and PD-L2 (B7-DC) (6, 7). PD-1 is expressed on activated T cells, B cells, monocytes, and dendritic cells while PD-L1 expression is constitutive on the same cells and also on nonhematopoietic cells such as lung endothelial cells and hepatocytes (8, 9). Ligation of PD-L1 with PD-1 induces co-inhibitory signals on T</p> |

 Tel: 1-631-559-9269 1-516-512-3133

 Email: info@creative-biomart.com  Fax: 1-631-938-8127

 45-1 Ramsey Road, Shirley, NY 11967, USA

cells promoting their apoptosis, anergy, and functional exhaustion (10). Thus, the PD-1:PD-L1 interaction is a key regulator of the threshold of immune response and peripheral immune tolerance (11). Finally, blockade of the PD-1: PD-L1 interaction by either antibodies or genetic manipulation accelerates tumor eradication and shows potential for improving cancer immunotherapy (12, 13).

Predicted N Terminal Leu25

Form Lyophilized from a 0.2 µm filtered solution in PBS with Trehalose.

Bio-activity Measured by its binding ability in a functional ELISA. When Recombinant Human PDCDL1 Fc Chimera is immobilized at 1 µg/mL (100 µL/well), the concentration of Biotinylated Recombinant Human PDCD1 Fc Chimera Avi-tag that produces 50% of the optimal binding response is 10-90 ng/mL.

Molecular Mass 62-88 kDa, under reducing conditions

Endotoxin <0.10 EU per 1 µg of the protein by the LAL method.

Purity >95%, by SDS-PAGE visualized with Silver Staining and quantitative densitometry by Coomassie® Blue Staining.

Applications Bioactivity

Storage Use a manual defrost freezer and avoid repeated freeze-thaw cycles. 12 months from date of receipt, -20 to -70 °C as supplied. 1 month, 2 to 8 °C under sterile conditions after reconstitution. 3 months, -20 to -70 °C under sterile conditions after reconstitution.

Reconstitution Reconstitute at 250 µg/mL in PBS.

 Tel: 1-631-559-9269 1-516-512-3133

 Email: info@creative-biomart.com  Fax: 1-631-938-8127

 45-1 Ramsey Road, Shirley, NY 11967, USA

Conjugation Biotin

GENE INFORMATION

Gene Name PDCD1 programmed cell death 1 [Homo sapiens]

Official Symbol PDCD1

Synonyms PDCD1; programmed cell death 1; programmed cell death protein 1; CD279; PD1; protein PD-1; PD-1; SLEB2; hPD-1; hPD-I;

Gene ID 5133

mRNA Refseq NM_005018

Protein Refseq NP_005009

MIM 600244

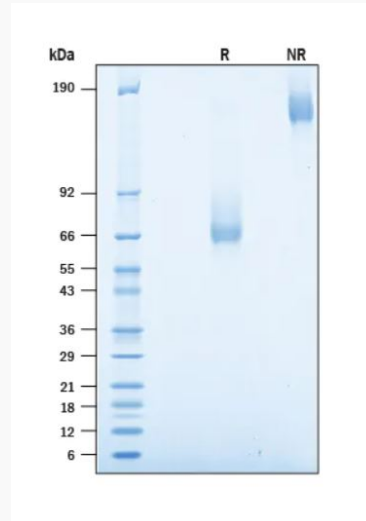
UniProt ID Q15116

 Tel: 1-631-559-9269 1-516-512-3133

 Email: info@creative-biomart.com  Fax: 1-631-938-8127

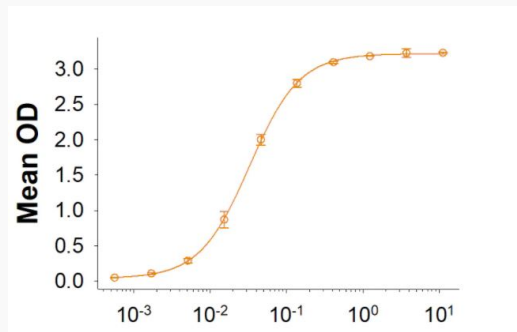
 45-1 Ramsey Road, Shirley, NY 11967, USA

SDS-PAGE



2 $\mu\text{g}/\text{lane}$ Protein was resolved with SDS-PAGE under reducing (R) and non-reducing (NR) conditions and visualized by Coomassie® Blue staining.

Binding Activity



 Tel: 1-631-559-9269 1-516-512-3133

 Email: info@creative-biomart.com  Fax: 1-631-938-8127

 45-1 Ramsey Road, Shirley, NY 11967, USA