

Active Recombinant Human PDCD1 Protein, hlgG-tagged

Cat. No. PDCD1-06H Lot. No. (See product label)

SPECIFICATION

Product Overview	Recombinant human PD-1 (21-170aa), fused to hlgG-tag at C-terminus, was expressed in HEK293 cell and purified by using conventional chromatography techniques.
Species	Human
Source	HEK293
ProteinLength	21-170aa
Description	Programmed cell death protein 1 (PDCD1) is an immune-inhibitory receptor expressed in activated T cells; it is involved in the regulation of T-cell functions, including those of effector CD8+ T cells. In addition, this protein can also promote the differentiation of CD4+ T cells into T regulatory cells. PDCD1 is expressed in many types of tumors including melanomas, and has demonstrated to play a role in anti-tumor immunity. Moreover, this protein has been shown to be involved in safeguarding against autoimmunity, however, it can also contribute to the inhibition of effective anti-tumor and anti-microbial immunity.
Form	Liquid
Bio-activity	Measured by its binding ability in a functional ELISA with Human PD-L1/B7-H1.
Molecular Mass	42.9 kDa (383aa)

 Tel: 1-631-559-9269 1-516-512-3133

 Email: info@creative-biomart.com  Fax: 1-631-938-8127

 45-1 Ramsey Road, Shirley, NY 11967, USA

AA Sequence	PGWFLDSPDRPWNPPPTFSPALLVVTEGDNATFTCSFSNTSEFVLNWYRMSPSNQ TDKLAAFPEDRSQPGQDCRFRVTQLPNGRDFHMSVVRARRNDSGTYLCGAISLAP KAQIKESLRAELRVTERRAEVPTAHPSPSPRPAGQFQTLV
Endotoxin	< 1 EU/μg of protein (determined by LAL method)
Purity	> 95% by SDS-PAGE
Applications	SDS-PAGE, Bioactivity
Storage	Can be stored at +2 to +8 centigrade for 1 week. For long term storage, aliquot and store at -20 to -80 centigrade. Avoid repeated freezing and thawing cycles.
Concentration	0.5 mg/mL (determined by absorbance at 280nm)
Storage Buffer	Phosphate-Buffered Saline (pH 7.4) containing 10% glycerol

GENE INFORMATION

Gene Name	PDCD1 programmed cell death 1 [Homo sapiens (human)]
Official Symbol	PDCD1
Synonyms	PDCD1; programmed cell death 1; PD1; PD-1; CD279; SLEB2; hPD-1; hPD-I; hSLE1; programmed cell death protein 1; programmed cell death 1 protein; protein PD-1; systemic lupus erythematosus susceptibility 2
Gene ID	5133
mRNA Refseq	NM_005018

 Tel: 1-631-559-9269 1-516-512-3133

 Email: info@creative-biomart.com  Fax: 1-631-938-8127

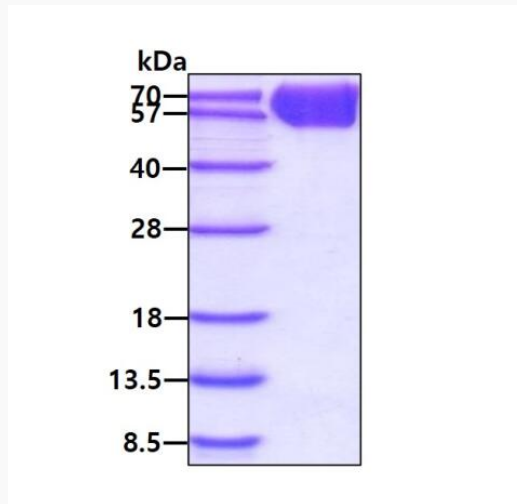
 45-1 Ramsey Road, Shirley, NY 11967, USA

Protein Refseq NP_005009

MIM 600244

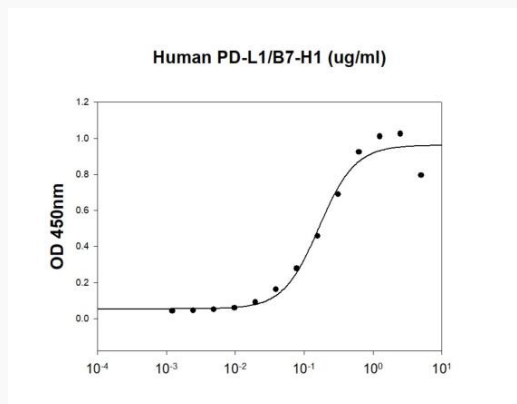
UniProt ID Q15116

SDS-PAGE



3µg by SDS-PAGE under reducing condition and visualized by coomassie blue stain

Biological Activity



Tel: 1-631-559-9269 1-516-512-3133

Email: info@creative-biomart.com Fax: 1-631-938-8127

45-1 Ramsey Road, Shirley, NY 11967, USA



Human PDCD1 is coated at 5 µg/mL (100 µL/well) can bind Human PD-L1/B7-H1 in a Functional ELISA assay.

 Tel: 1-631-559-9269 1-516-512-3133

 Email: info@creative-biomart.com  Fax: 1-631-938-8127

 45-1 Ramsey Road, Shirley, NY 11967, USA