

Recombinant Human PDCD1 Protein, His-tagged

Cat. No. PDCD1-1173H Lot. No. (See product label)

SPECIFICATION

Product Overview	Recombinant Human PDCD1 Protein (Pro21-Val170) with His tag was expressed in 293F.
Species	Human
Source	HEK293
ProteinLength	Pro21-Val170
Description	<p>Programmed cell death protein 1 (PDCD1) is an immune-inhibitory receptor expressed in activated T cells; it is involved in the regulation of T-cell functions, including those of effector CD8+ T cells. In addition, this protein can also promote the differentiation of CD4+ T cells into T regulatory cells. PDCD1 is expressed in many types of tumors including melanomas, and has demonstrated to play a role in anti-tumor immunity. Moreover, this protein has been shown to be involved in safeguarding against autoimmunity, however, it can also contribute to the inhibition of effective anti-tumor and anti-microbial immunity.</p>
Form	Freeze-dried powder
Molecular Mass	Predicted Molecular Mass: 18.4 kDa; Accurate Molecular Mass: 36-45 kDa
Purity	> 90%
Applications	Positive Control; Immunogen; SDS-PAGE; WB.

 Tel: 1-631-559-9269 1-516-512-3133

 Email: info@creative-biomart.com  Fax: 1-631-938-8127

 45-1 Ramsey Road, Shirley, NY 11967, USA

Stability	The thermal stability is described by the loss rate. The loss rate was determined by accelerated thermal degradation test, that is, incubate the protein at 37 centigrade for 48h, and no obvious degradation and precipitation were observed. The loss rate is less than 5% within the expiration date under appropriate storage condition.
Storage	Avoid repeated freeze/thaw cycles. Store at 2-8 centigrade for one month. Aliquot and store at -80 centigrade for 12 months.
Storage Buffer	20mM Tris, 150mM NaCl, pH8.0, containing 1mM EDTA, 1mM DTT, 0.01% SKL, 5% Trehalose and Proclin300.
Reconstitution	Reconstitute in 20mM Tris, 150mM NaCl (pH8.0) to a concentration of 0.1-1.0 mg/mL. Do not vortex.

GENE INFORMATION

Gene Name	PDCD1 programmed cell death 1 [Homo sapiens (human)]
Official Symbol	PDCD1
Synonyms	PDCD1; programmed cell death 1; PD1; PD-1; CD279; SLEB2; hPD-1; hPD-I; hSLE1; programmed cell death protein 1; programmed cell death 1 protein; protein PD-1; systemic lupus erythematosus susceptibility 2
Gene ID	5133
mRNA Refseq	NM_005018
Protein Refseq	NP_005009
MIM	600244

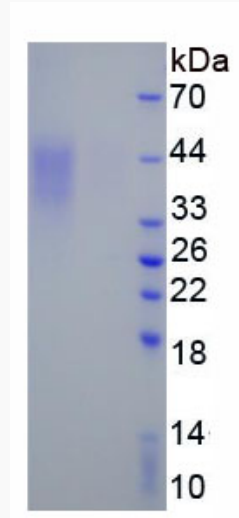
 Tel: 1-631-559-9269 1-516-512-3133

 Email: info@creative-biomart.com  Fax: 1-631-938-8127

 45-1 Ramsey Road, Shirley, NY 11967, USA

UniProt ID

Q15116



 Tel: 1-631-559-9269 1-516-512-3133

 Email: info@creative-biomart.com  Fax: 1-631-938-8127

 45-1 Ramsey Road, Shirley, NY 11967, USA