

Recombinant Full Length Human PDCD1 Protein, C-Flag-tagged

Cat. No. PDCD1-122HFL **Lot. No.** (See product label)

SPECIFICATION

Product Overview	Recombinant Full Length Human PDCD1 Protein, fused to Flag-tag at C-terminus, was expressed in Mammalian cells.
Species	Human
Source	Mammalian Cells
Description	Programmed cell death protein 1 (PDCD1) is an immune-inhibitory receptor expressed in activated T cells; it is involved in the regulation of T-cell functions, including those of effector CD8+ T cells. In addition, this protein can also promote the differentiation of CD4+ T cells into T regulatory cells. PDCD1 is expressed in many types of tumors including melanomas, and has demonstrated to play a role in anti-tumor immunity. Moreover, this protein has been shown to be involved in safeguarding against autoimmunity, however, it can also contribute to the inhibition of effective anti-tumor and anti-microbial immunity.
Form	25 mM Tris HCl, pH 7.3, 100 mM glycine, 10% glycerol.
Molecular Mass	29.2 kDa
AA Sequence	MQIPQAPWPVVWAVLQLGWRPGWFLDSPDRPWNPPTFSPALLVVTEGDNATFTCS FSNTSESVLNWYRM SPSNQTDKLAAPEDRSQPGQDCRFRTQLPNGRDFHMS VVRARRNDSGTYLCAISLAPKAQIKESLRA ELRVTERRAEVPTAHPSPSPRPAGQ FQTLVVGVVGGLLGSLVLLVWVLAVICSRARGTIGARRTGQPLK EDPSAVPVFVSVD

 Tel: 1-631-559-9269 1-516-512-3133

 Email: info@creative-biomart.com  Fax: 1-631-938-8127

 45-1 Ramsey Road, Shirley, NY 11967, USA

YGELDFQWREKTPEPPVPCVPEQTEYATIVFPSGMGTSSPARRGSADGPRSAQPL
RPE
DGHCSWPLTRTRPLEQKLISEEDLAANDILDYKDDDDKV

Purity	> 80% as determined by SDS-PAGE and Coomassie blue staining.
Stability	Stable for 12 months from the date of receipt of the product under proper storage and handling conditions. Avoid repeated freeze-thaw cycles.
Storage	Store at -80 centigrade.
Concentration	>50 ug/mL as determined by microplate BCA method.
Preparation	Recombinant protein was captured through anti-DDK affinity column followed by conventional chromatography steps.
Protein Families	Druggable Genome, Transmembrane
Protein Pathways	Cell adhesion molecules (CAMs), T cell receptor signaling pathway
Full Length	Full L.

GENE INFORMATION

Gene Name	PDCD1 programmed cell death 1 [Homo sapiens (human)]
Official Symbol	PDCD1
Synonyms	PD1; PD-1; CD279; SLEB2; hPD-1; hPD-I; hSLE1
Gene ID	5133

 Tel: 1-631-559-9269 1-516-512-3133

 Email: info@creative-biomart.com  Fax: 1-631-938-8127

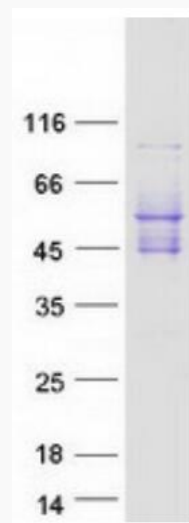
 45-1 Ramsey Road, Shirley, NY 11967, USA

mRNA Refseq [NM_005018.3](#)

Protein Refseq [NP_005009.2](#)

MIM [600244](#)

UniProt ID [Q15116](#)



Coomassie blue staining of purified PDCD1 protein.

 Tel: 1-631-559-9269 1-516-512-3133

 Email: info@creative-biomart.com  Fax: 1-631-938-8127

 45-1 Ramsey Road, Shirley, NY 11967, USA