

Recombinant Human PDCD1 Protein (Met1-Val170), C-His tagged

Cat. No. PDCD1-1347H Lot. No. (See product label)

SPECIFICATION

Product Overview	Recombinant human PDCD1 (Met1-Val170) fused with the C-terminal His tag was expressed in Mammalian cells.
Species	Human
Source	Mammalian Cells
ProteinLength	Met1-Val170
Form	Lyophilized powder/frozen liquid
Molecular Mass	20.04 kDa
Purity	>90% as determined by SDS-PAGE.
Notes	For research use only.
Storage	Use a manual defrost freezer and avoid repeated freeze thaw cycles. Store at 2 to 8 centigrade for one week. Store at -20 to -80 centigrade for twelve months from the date of receipt.
Storage Buffer	Supplied as solution form in 150 mM NaCl, 50 mM Tris-HCl, pH 7.5 or lyophilized from 150 mM NaCl, 50 mM Tris-HCl, pH 7.5.

 Tel: 1-631-559-9269 1-516-512-3133

 Email: info@creative-biomart.com  Fax: 1-631-938-8127

 45-1 Ramsey Road, Shirley, NY 11967, USA

Reconstitution Reconstitute in sterile water for a stock solution.

Shipping They are shipped out with dry ice/blue ice unless customers require otherwise.

GENE INFORMATION

Gene Name PDCD1 programmed cell death 1 [Homo sapiens (human)]

Official Symbol PDCD1

Synonyms PDCD1; programmed cell death 1; programmed cell death protein 1; CD279; PD1; protein PD-1; PD-1; SLEB2; hPD-1; hPD-I;

Gene ID 5133

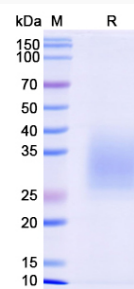
mRNA Refseq NM_005018

Protein Refseq NP_005009

MIM 600244

UniProt ID Q15116

SDS-PAGE

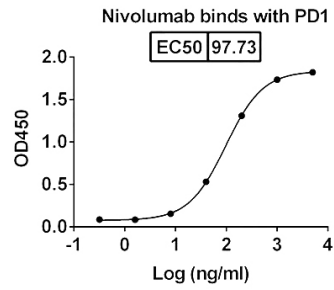


 Tel: 1-631-559-9269 1-516-512-3133

 Email: info@creative-biomart.com  Fax: 1-631-938-8127

 45-1 Ramsey Road, Shirley, NY 11967, USA

Activity



 Tel: 1-631-559-9269 1-516-512-3133

 Email: info@creative-biomart.com  Fax: 1-631-938-8127

 45-1 Ramsey Road, Shirley, NY 11967, USA