

Active Recombinant Human PDCD1 Protein, Fc-tagged, Alexa Fluor® 488 conjugated

Cat. No. PDCD1-21H Lot. No. (See product label)

SPECIFICATION

Product Overview	Recombinant human Alexa Fluor® 488 conjugated PD-1 (Leu25-Gln167) protein with human IgG1 (Pro100-Lys330) Fc tag at C-terminus was expressed in mouse myeloma cell line.
Species	Human
Source	NS0
ProteinLength	25-167 a.a.
Description	Programmed cell death protein 1 (PDCD1) is an immune-inhibitory receptor expressed in activated T cells; it is involved in the regulation of T-cell functions, including those of effector CD8+ T cells. In addition, this protein can also promote the differentiation of CD4+ T cells into T regulatory cells. PDCD1 is expressed in many types of tumors including melanomas, and has demonstrated to play a role in anti-tumor immunity. Moreover, this protein has been shown to be involved in safeguarding against autoimmunity, however, it can also contribute to the inhibition of effective anti-tumor and anti-microbial immunity.
Form	Disulfide-linked homodimer Labeled with Alexa Fluor® 488 via amines Excitation Wavelength: 488 nm Emission Wavelength: 515-545 nm

 Tel: 1-631-559-9269 1-516-512-3133

 Email: info@creative-biomart.com  Fax: 1-631-938-8127

 45-1 Ramsey Road, Shirley, NY 11967, USA

Bio-activity	Measured by flow cytometry for its ability to bind anti-human PD-1 Monoclonal Antibody conjugated beads. The concentration of Recombinant Human PD-1 Fc Chimera Alexa Fluor [®] 488 that produces 50% of the binding response is 5.00-50.0 ng/mL.
Molecular Mass	42.6 kDa
N-terminal Sequence Analysis	Leu25
Endotoxin	<1.0 EU/μg of the protein by the LAL method.
Purity	>90%, by SDS-PAGE visualized with Silver Staining and quantitative densitometry by Coomassie [®] Blue Staining.
Storage	Protect from light. Use a manual defrost freezer and avoid repeated freeze-thaw cycles. 6 months from date of receipt, -20 to -70 centigrade as supplied. 1 month, 2 to 8 centigrade under sterile conditions after opening. 3 months, -20 to -70 centigrade under sterile conditions after opening.
Storage Buffer	Supplied as a 0.2 μm filtered solution in PBS with BSA as a carrier protein.
Shipping	The product is shipped with dry ice or equivalent.
Conjugation	Alexa Fluor 488

GENE INFORMATION

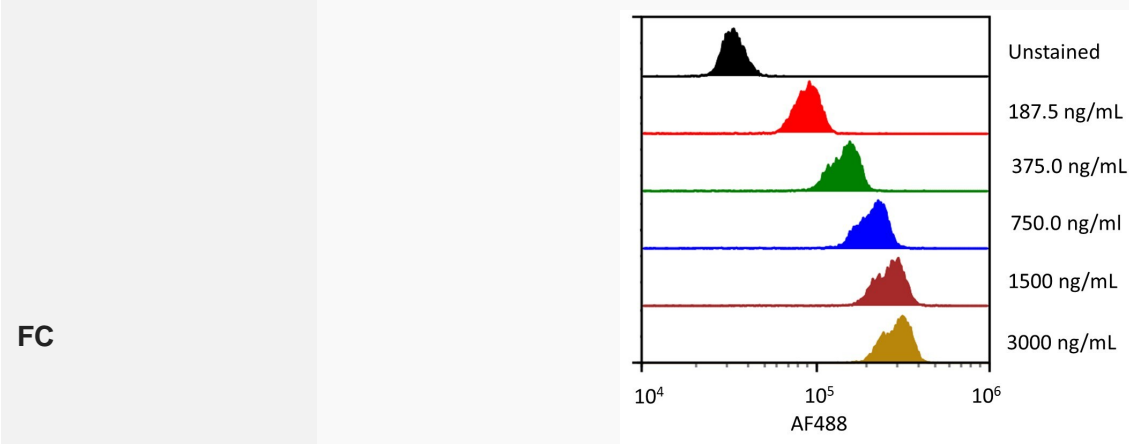
Gene Name [PDCD1 programmed cell death 1 \[Homo sapiens \(human\) \]](#)

 Tel: 1-631-559-9269 1-516-512-3133

 Email: info@creative-biomart.com  Fax: 1-631-938-8127

 45-1 Ramsey Road, Shirley, NY 11967, USA

Official Symbol	PDCD1
Synonyms	PDCD1; programmed cell death 1; PD1; PD-1; CD279; SLEB2; hPD-1; hPD-I; hSLE1; programmed cell death protein 1; programmed cell death 1 protein; protein PD-1; systemic lupus erythematosus susceptibility 2
Gene ID	5133
mRNA Refseq	NM_005018
Protein Refseq	NP_005009
MIM	600244
UniProt ID	Q15116

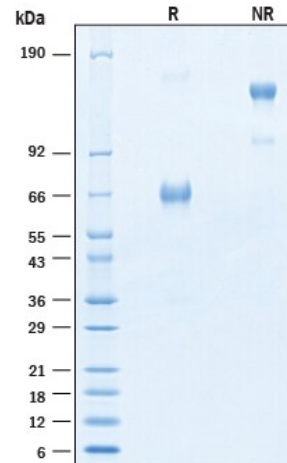


Streptavidin coated beads conjugated to biotinylated anti-human PD-1 Monoclonal Antibody were stained with the indicated concentrations of Recombinant Human PD-1 Fc Chimera Alexa Fluor® 488.

 Tel: 1-631-559-9269 1-516-512-3133

 Email: info@creative-biomart.com  Fax: 1-631-938-8127

 45-1 Ramsey Road, Shirley, NY 11967, USA

SDS-PAGE

2 µg/lane of Recombinant Human PD-1 Fc Chimera Alexa Fluor® 488 Protein was resolved with SDS-PAGE under reducing (R) and non-reducing (NR) conditions and visualized by Coomassie® Blue staining, showing bands at 60-70 kDa and 120-140 kDa, respectively.

Tel: 1-631-559-9269 1-516-512-3133

Email: info@creative-biomart.com Fax: 1-631-938-8127

45-1 Ramsey Road, Shirley, NY 11967, USA