

Active Recombinant Human PDCD1 protein, hFc&His-tagged

Cat. No. PDCD1-2613H **Lot. No.** (See product label)

SPECIFICATION

Product Overview	Active Recombinant Human PD-1/PDCD1/CD279 Protein is produced by HEK293 expression system. The target protein is expressed with sequence (Leu25-Thr168) of human PD-1 (Accession #NP_005009.2) fused with an Fc, 6xHis tag at the C-terminus.
Species	Human
Source	HEK293
ProteinLength	Leu25-Thr168
Form	Lyophilized from a 0.22 µm filtered solution of PBS, pH 7.4.
Bio-activity	Measured by its binding ability in a functional ELISA. Immobilized Recombinant Human PD-1 at 5 µg/mL (100 µL/well) can bind Recombinant Human PD-L1 with a linear range of 0.3-1.3 µg/mL.
Molecular Mass	60-70 kDa
Endotoxin	< 0.1 EU/µg of the protein by LAL method.
Purity	> 97% by SDS-PAGE.
Storage	Store the lyophilized protein at -20°C to -80 °C for long term. After reconstitution, the protein solution is stable at -20 °C for 3 months, at 2-8 °C for

 Tel: 1-631-559-9269 1-516-512-3133

 Email: info@creative-biomart.com  Fax: 1-631-938-8127

 45-1 Ramsey Road, Shirley, NY 11967, USA

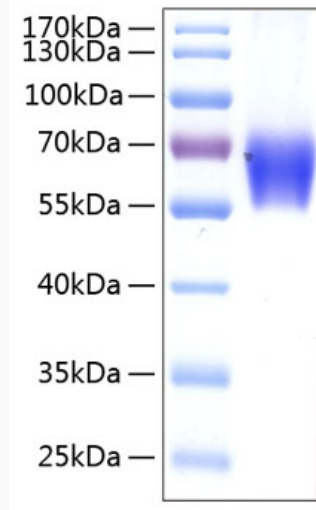
up to 1 week.

Reconstitution Reconstitute to a concentration of 0.1-0.5 mg/mL in sterile distilled water.

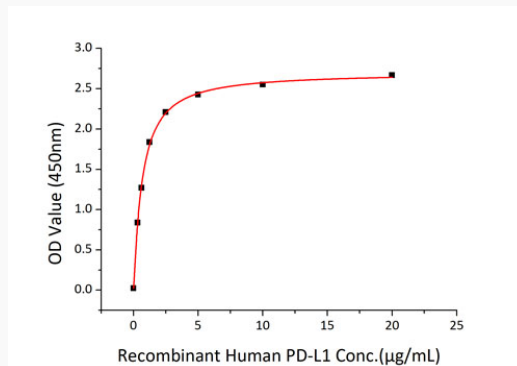
GENE INFORMATION

Gene Name PDCD1 programmed cell death 1 [Homo sapiens]**Official Symbol** PDCD1**Synonyms** PDCD1; programmed cell death 1; programmed cell death protein 1; CD279; PD1; protein PD-1; PD-1; SLEB2; hPD-1; hPD-I;**Gene ID** 5133**mRNA Refseq** NM_005018**Protein Refseq** NP_005009**MIM** 600244**UniProt ID** Q15116 Tel: 1-631-559-9269 1-516-512-3133 Email: info@creative-biomart.com  Fax: 1-631-938-8127 45-1 Ramsey Road, Shirley, NY 11967, USA

SDS-PAGE



Bio-activity



 Tel: 1-631-559-9269 1-516-512-3133

 Email: info@creative-biomart.com  Fax: 1-631-938-8127

 45-1 Ramsey Road, Shirley, NY 11967, USA