

Active Recombinant Human PDCD1 protein, His-tagged

Cat. No. PDCD1-28H Lot. No. (See product label)

SPECIFICATION

| | |
|-------------------------|--|
| Product Overview | Recombinant Human PDCD1 fused with His tag at N-terminal was expressed in HEK293. |
| Species | Human |
| Source | HEK293 |
| Form | Lyophilized from sterile PBS, pH 7.4 |
| Bio-activity | Measured by its binding ability in a functional ELISA. Immobilized human PD-1 at 10 µg/ml (100 µl/well) can bind recombinant human B7-H1 / PD-L1 / Fc chimera with a linear range of 0.02-0.4 µg/ml. |
| Molecular Mass | The recombinant mature human PD1 consists of 154 amino acids and has a calculated molecular mass of 17.4 kDa. |
| Endotoxin | < 1.0 EU per µg of the protein as determined by the LAL method |
| Purity | > 95 % as determined by SDS-PAGE |
| Stability | Samples are stable for up to twelve months from date of receipt at -70 centigrade. |
| Storage | Store it under sterile conditions at -20 centigrade to -80 centigrade. It is recommended that the protein be aliquoted for optimal storage. Avoid repeated freeze-thaw cycles. |

 Tel: 1-631-559-9269 1-516-512-3133

 Email: info@creative-biomart.com  Fax: 1-631-938-8127

 45-1 Ramsey Road, Shirley, NY 11967, USA

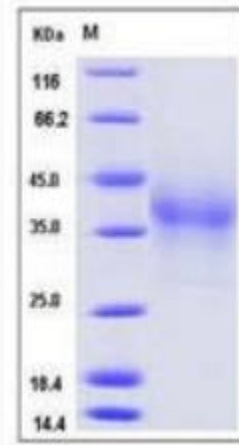
GENE INFORMATION

| | |
|----------------------------|--|
| Gene Name | PDCD1 programmed cell death 1 [Homo sapiens] |
| Official Symbol | PDCD1 |
| Synonyms | PDCD1; programmed cell death 1; programmed cell death protein 1; CD279; PD1; protein PD-1; PD-1; SLEB2; hPD-1; hPD-I; |
| Gene ID | 5133 |
| mRNA Refseq | NM_005018 |
| Protein Refseq | NP_005009 |
| MIM | 600244 |
| UniProt ID | Q15116 |
| Chromosome Location | 2q37.3 |
| Pathway | Adaptive Immune System, organism-specific biosystem; Cell adhesion molecules (CAMs), organism-specific biosystem; Cell adhesion molecules (CAMs), conserved biosystem; Costimulation by the CD28 family, organism-specific biosystem; Immune System, organism-specific biosystem; PD-1 signaling, organism-specific biosystem; T cell receptor signaling pathway, organism-specific biosystem; |
| Function | protein binding; protein tyrosine phosphatase activity; signal transducer activity; |

 Tel: 1-631-559-9269 1-516-512-3133

 Email: info@creative-biomart.com  Fax: 1-631-938-8127

 45-1 Ramsey Road, Shirley, NY 11967, USA



 Tel: 1-631-559-9269 1-516-512-3133

 Email: info@creative-biomart.com  Fax: 1-631-938-8127

 45-1 Ramsey Road, Shirley, NY 11967, USA