

Recombinant Human PDCD1 protein, GST-tagged

Cat. No. PDCD1-2943H **Lot. No.** (See product label)

SPECIFICATION

Product Overview	Recombinant Human PDCD1(1 a.a. - 288 a.a.) fused with GST tag at N-terminal was expressed in Wheat Germ.
Species	Human
Source	Wheat Germ
ProteinLength	1 a.a. - 288 a.a.
Description	This gene encodes a cell surface membrane protein of the immunoglobulin superfamily. This protein is expressed in pro-B-cells and is thought to play a role in their differentiation. In mice, expression of this gene is induced in the thymus when anti-CD3 antibodies are injected and large numbers of thymocytes undergo apoptosis. Mice deficient for this gene bred on a BALB/c background developed dilated cardiomyopathy and died from congestive heart failure. These studies suggest that this gene product may also be important in T cell function and contribute to the prevention of autoimmune diseases.
Form	50 mM Tris-HCl, 10 mM reduced Glutathione, pH=8.0 in the elution buffer.
Molecular Mass	58 kDa
AA Sequence	MQIPQAPWPVWVAVLQLGWRPGWFLDSPDRPWNPPTFSPALLVVTEGDNATFTCS FSNTSEFVLNWyRMSPSNQTDKLAAPEDRSQPGQDCRFRVTQLPNGRDFHMSV VRARRNDSGYLCAISLAPKAQIKESLRAELRVTERRAEVPTAHPSPSPRPAGQFQ

 Tel: 1-631-559-9269 1-516-512-3133

 Email: info@creative-biomart.com  Fax: 1-631-938-8127

 45-1 Ramsey Road, Shirley, NY 11967, USA

TLVVGVVGGLLGLSVLLVWVLAVICSRAARGTIGARRTGQPLKEDPSAVPVFSVDYG
ELDFQWREKTPEPPVPCVPEQTEYATIVFPSEMGTSPPARRGSADGPRSAQPLRP
EDGHCSWPL

Applications

Enzyme-linked Immunoabsorbent Assay; Western Blot (Recombinant protein);
Antibody Production; Protein Array

Notes

Best use within three months from the date of receipt of this protein.

Storage

Store at -80 centigrade. Aliquot to avoid repeated freezing and thawing.

GENE INFORMATION

Gene Name

PDCD1 programmed cell death 1 [Homo sapiens]

Official Symbol

PDCD1

Synonyms

PDCD1; programmed cell death 1; programmed cell death protein 1; CD279; PD1;
protein PD-1; PD-1; SLEB2; hPD-1; hPD-I;

Gene ID

5133

mRNA Refseq

NM_005018

Protein Refseq

NP_005009

MIM

600244

UniProt ID

Q15116

**Chromosome
Location**

2q37.3

 Tel: 1-631-559-9269 1-516-512-3133

 Email: info@creative-biomart.com  Fax: 1-631-938-8127

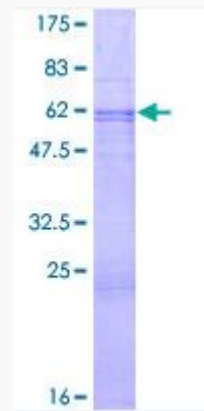
 45-1 Ramsey Road, Shirley, NY 11967, USA

Pathway

Adaptive Immune System, organism-specific biosystem; Cell adhesion molecules (CAMs), organism-specific biosystem; Cell adhesion molecules (CAMs), conserved biosystem; Costimulation by the CD28 family, organism-specific biosystem; Immune System, organism-specific biosystem; PD-1 signaling, organism-specific biosystem; T cell receptor signaling pathway, organism-specific biosystem;

Function

protein binding; protein tyrosine phosphatase activity; signal transducer activity;



Tel: 1-631-559-9269 1-516-512-3133

Email: info@creative-biomart.com Fax: 1-631-938-8127

45-1 Ramsey Road, Shirley, NY 11967, USA