

Recombinant Human PDCD1 protein, mFc-tagged

Cat. No. PDCD1-356H Lot. No. (See product label)

SPECIFICATION

Product Overview	Recombinant Human PDCD1 protein(Q15116-1)(Leu25-Gln167), fused with C-terminal mFc tag, was expressed in HEK293.
Species	Human
Source	HEK293
ProteinLength	Leu25-Gln167
Tag	C-mFc
Form	Lyophilized from 0.22µm filtered solution in PBS (pH 7.4). Normally 5% trehalose is added as protectant before lyophilization.
Bio-activity	Immobilized Human PD-1, mFc Tag at 2µg/ml (100µl/well) on the plate. Dose response curve for Human PD-L1, hFc Tag with the EC50 of 0.11µg/ml determined by ELISA.
Molecular Mass	The protein has a predicted MW of 41.6 kDa. Due to glycosylation, the protein migrates to 64-68 kDa based on Tris-Bis PAGE result.
Endotoxin	Less than 1EU per µg by the LAL method.
Purity	> 95% as determined by Tris-Bis PAGE; > 95% as determined by HPLC

 Tel: 1-631-559-9269 1-516-512-3133

 Email: info@creative-biomart.com  Fax: 1-631-938-8127

 45-1 Ramsey Road, Shirley, NY 11967, USA

Storage Reconstituted protein stable at -80°C for 12 months, 4°C for 1 week. Use a manual defrost freezer and avoid repeated freeze-thaw cycles.

Reconstitution Centrifuge tubes before opening. Reconstituting to a concentration more than 100 µg/ml is recommended. Dissolve the lyophilized protein in distilled water.

GENE INFORMATION

Gene Name [PDCD1 programmed cell death 1 \[Homo sapiens \]](#)

Official Symbol [PDCD1](#)

Synonyms PDCD1; programmed cell death 1; programmed cell death protein 1; CD279; PD1; protein PD-1; PD-1; SLEB2; hPD-1; hPD-I;

Gene ID [5133](#)

mRNA Refseq [NM_005018](#)

Protein Refseq [NP_005009](#)

MIM [600244](#)

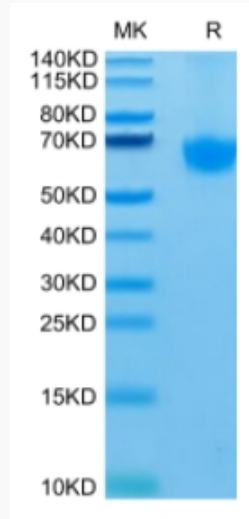
UniProt ID [Q15116](#)

 Tel: 1-631-559-9269 1-516-512-3133

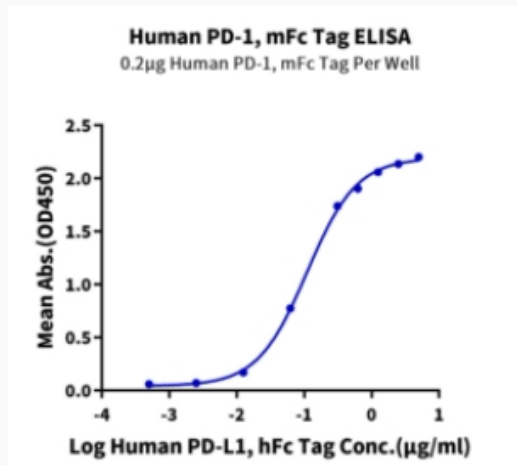
 Email: info@creative-biomart.com  Fax: 1-631-938-8127

 45-1 Ramsey Road, Shirley, NY 11967, USA

Tris-Bis PAGE



ELISA Data



 Tel: 1-631-559-9269 1-516-512-3133

 Email: info@creative-biomart.com  Fax: 1-631-938-8127

 45-1 Ramsey Road, Shirley, NY 11967, USA