

Recombinant Human PDCD1 Protein (Pro21-Gln167), C-His tagged

Cat. No. PDCD1-4827H Lot. No. (See product label)

SPECIFICATION

Product Overview	Recombinant human PDCD1 (Pro21-Gln167) fused with the C-terminal His tag was expressed in Mammalian cells.
Species	Human
Source	Mammalian Cells
ProteinLength	Pro21-Gln167
Form	Lyophilized powder/frozen liquid
Molecular Mass	19.73 kDa
Purity	>90% as determined by SDS-PAGE.
Notes	For research use only.
Storage	Use a manual defrost freezer and avoid repeated freeze thaw cycles. Store at 2 to 8 centigrade for one week. Store at -20 to -80 centigrade for twelve months from the date of receipt.
Storage Buffer	Supplied as solution form in PBS, pH 7.4 or lyophilized from PBS, pH 7.4.
Reconstitution	Reconstitute in sterile water for a stock solution.

 Tel: 1-631-559-9269 1-516-512-3133

 Email: info@creative-biomart.com  Fax: 1-631-938-8127

 45-1 Ramsey Road, Shirley, NY 11967, USA

Shipping

They are shipped out with dry ice/blue ice unless customers require otherwise.

GENE INFORMATION
Gene Name

PDCD1 programmed cell death 1 [Homo sapiens (human)]

Official Symbol

PDCD1

Synonyms

PDCD1; programmed cell death 1; programmed cell death protein 1; CD279; PD1; protein PD-1; PD-1; SLEB2; hPD-1; hPD-I;

Gene ID

5133

mRNA Refseq

NM_005018

Protein Refseq

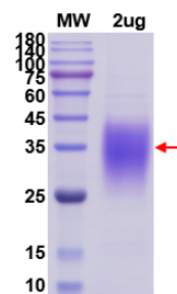
NP_005009

MIM

600244

UniProt ID

Q15116

SDS-PAGE


 Tel: 1-631-559-9269 1-516-512-3133

 Email: info@creative-biomart.com  Fax: 1-631-938-8127

 45-1 Ramsey Road, Shirley, NY 11967, USA