

## Recombinant Human PDCD1 protein, His-tagged

Cat. No. PDCD1-839H Lot. No. (See product label)

### SPECIFICATION

<b>Product Overview</b>	Recombinant Human PDCD1 aa. (Leu41~Ala132) fused with N-terminal His tag was produced in E. coli cells.
<b>Species</b>	Human
<b>Source</b>	E.coli
<b>ProteinLength</b>	Leu41~Ala132
<b>Description</b>	<p>This gene encodes a cell surface membrane protein of the immunoglobulin superfamily. This protein is expressed in pro-B-cells and is thought to play a role in their differentiation. In mice, expression of this gene is induced in the thymus when anti-CD3 antibodies are injected and large numbers of thymocytes undergo apoptosis. Mice deficient for this gene bred on a BALB/c background developed dilated cardiomyopathy and died from congestive heart failure. These studies suggest that this gene product may also be important in T cell function and contribute to the prevention of autoimmune diseases.</p>
<b>Form</b>	Freeze-dried powder
<b>Molecular Mass</b>	14kDa as determined by SDS-PAGE reducing conditions.
<b>Endotoxin</b>	<1.0EU per 1g (determined by the LAL method)
<b>Purity</b>	>92%

 Tel: 1-631-559-9269 1-516-512-3133

 Email: [info@creative-biomart.com](mailto:info@creative-biomart.com)  Fax: 1-631-938-8127

 45-1 Ramsey Road, Shirley, NY 11967, USA

<b>Characteristic</b>	The isoelectric point is 8.6.
<b>Applications</b>	SDS-PAGE; WB; ELISA; IP; CoIP; Purification; Amine Reactive Labeling.
<b>Stability</b>	The thermal stability is described by the loss rate. The loss rate was determined by accelerated thermal degradation test, that is, incubate the protein at 37°C for 48h, and no obvious degradation and precipitation were observed. The loss rate is less than 5% within the expiration date under appropriate storage condition.
<b>Storage</b>	Avoid repeated freeze/thaw cycles. Store at 2-8°C for one month. Aliquot and store at -80°C for 12 months.
<b>Concentration</b>	200µg/mL
<b>Storage buffer</b>	20mM Tris, 150mM NaCl, pH8.0, containing 1mM EDTA, 1mM DTT, 0.01% sarcosyl, 5%Trehalose and Proclin300.
<b>Reconstitution</b>	Reconstitute in 20mM Tris, 150mM NaCl (pH8.0) to a concentration of 0.1-1.0 mg/mL. Do not vortex.

## GENE INFORMATION

<b>Gene Name</b>	<a href="#">PDCD1 programmed cell death 1 [ Homo sapiens (human) ]</a>
<b>Official Symbol</b>	<a href="#">PDCD1</a>
<b>Synonyms</b>	PD1; PD-1; CD279; SLEB2; hPD-1; hPD-I; hSLE1; programmed cell death 1 protein; protein PD-1; systemic lupus erythematosus susceptibility 2; programmed cell death protein 1
<b>Gene ID</b>	<a href="#">5133</a>

 Tel: 1-631-559-9269 1-516-512-3133

 Email: [info@creative-biomart.com](mailto:info@creative-biomart.com)  Fax: 1-631-938-8127

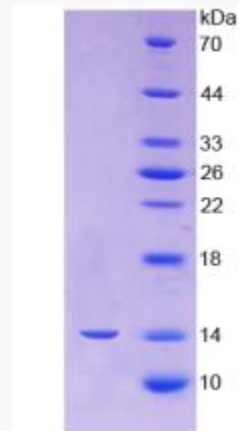
 45-1 Ramsey Road, Shirley, NY 11967, USA

mRNA Refseq [NM\\_005018.2](#)

Protein Refseq [NP\\_005009.2](#)

UniProt ID [Q15116](#)

**SDS-PAGE**



 Tel: 1-631-559-9269 1-516-512-3133

 Email: [info@creative-biomart.com](mailto:info@creative-biomart.com)  Fax: 1-631-938-8127

 45-1 Ramsey Road, Shirley, NY 11967, USA