

Recombinant Human PDCD1 protein, His-tagged, low endotoxin (HPLC-verified)

Cat. No. PDCD1-892HL Lot. No. (See product label)

SPECIFICATION

Product Overview Recombinant Human PDCD1 (Leu25-Gln167) protein (low endotoxin, HPLC-verified) was fused to His-tag at C-terminus and expressed in human 293 cells (HEK293).

Species Human

Source HEK293

ProteinLength Leu25-Gln167

Description

Programmed cell death protein 1 (PD-1) is also known as CD279 and PDCD1, is a type I membrane protein and is a member of the extended CD28/CTLA-4 family of T cell regulators. PDCD1 is expressed on the surface of activated T cells, B cells, macrophages, myeloid cells and a subset of thymocytes. PD-1 has two ligands, PD-L1 and PD-L2, which are members of the B7 family. PD-L1 is expressed on almost all murine tumor cell lines, including PA1 myeloma, P815 mastocytoma, and B16 melanoma upon treatment with IFN- γ . PD-L2 expression is more restricted and is expressed mainly by DCs and a few tumor lines. PD1 inhibits the T-cell proliferation and production of related cytokines including IL-1, IL-4, IL-10 and IFN- γ by suppressing the activation and transduction of PI3K/AKT pathway. In addition, coligation of PD1 inhibits BCR-mediated signal by dephosphorylating key signal transducer. In vitro, treatment of anti-CD3 stimulated T cells with PD-L1-Ig results in reduced T cell proliferation and IFN- γ secretion. Monoclonal antibodies targeting PD-1 that boost the immune system are being developed for the treatment of cancer.

 Tel: 1-631-559-9269 1-516-512-3133

 Email: info@creative-biomart.com  Fax: 1-631-938-8127

 45-1 Ramsey Road, Shirley, NY 11967, USA

Predicted N Terminal	Leu25
Form	Lyophilized from 0.22 µm filtered solution in PBS, pH7.4, 10% trehalose.
Molecular Mass	This protein has a calculated MW of 16.8 kDa. The reducing (R) protein migrates as 31-44 kDa in SDS-PAGE due to glycosylation.
Endotoxin	Less than 0.01 EU per µg by the LAL method.
Purity	>95% as determined by SDS-PAGE.
Storage	<p>For long term storage, the product should be stored at lyophilized state at -20 centigrade or lower.</p> <p>Please avoid repeated freeze-thaw cycles.</p> <p>This product is stable after storage at:</p> <ul style="list-style-type: none"> -20 to -70 centigrade for 12 months in lyophilized state; -70 centigrade for 3 months under sterile conditions after reconstitution.
Reconstitution	It is recommended that sterile water be added to the vial to prepare a stock solution of 0.2 ug/ul. Centrifuge the vial at 4°C before opening to recover the entire contents.

GENE INFORMATION

Gene Name	PDCD1
Official Symbol	PDCD1
Synonyms	PDCD1; programmed cell death 1; programmed cell death protein 1; CD279; PD1; protein PD-1; PD-1; SLEB2; hPD-1; hPD-I
Gene ID	5133

 Tel: 1-631-559-9269 1-516-512-3133

 Email: info@creative-biomart.com  Fax: 1-631-938-8127

 45-1 Ramsey Road, Shirley, NY 11967, USA

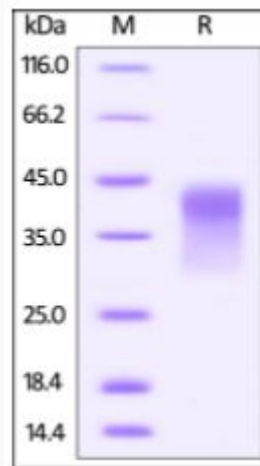
mRNA Refseq [NM_005018](#)

Protein Refseq [NP_005009](#)

MIM [600244](#)

UniProt ID [Q15116](#)

**SDS-PAGE of
PDCD1-892HL**



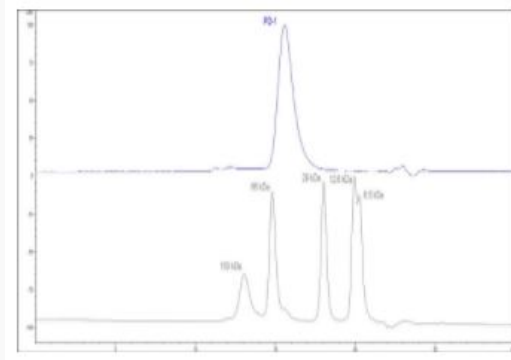
Human PD-1, His Tag, low endotoxin (HPLC-verified) on SDS-PAGE under reducing (R) condition. The gel was stained overnight with Coomassie Blue. The purity of the protein is greater than 95%.

 Tel: 1-631-559-9269 1-516-512-3133

 Email: info@creative-biomart.com  Fax: 1-631-938-8127

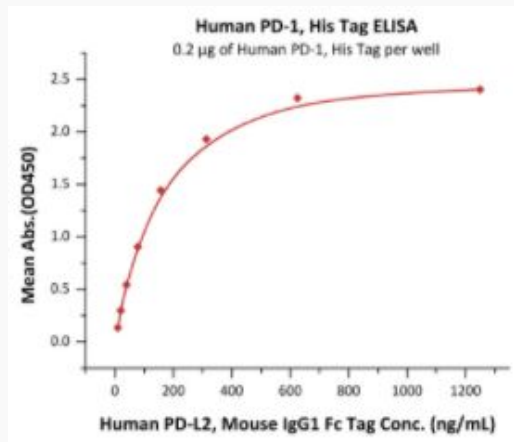
 45-1 Ramsey Road, Shirley, NY 11967, USA

**SEC-HPLC of
PDCD1-892HL**



The purity of Human PD-1, His Tag, low endotoxin (HPLC-verified) was greater than 90% as determined by SEC-HPLC.

Bioactivity-ELISA

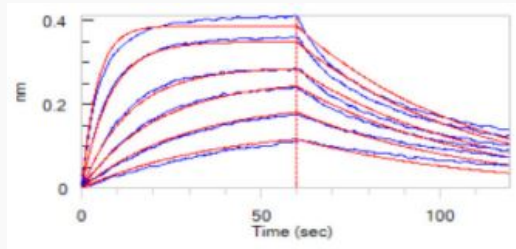


Immobilized Human PD-1, His Tag, low endotoxin (HPLC-verified) at 2 µg/mL (100 µL/well) can bind Human PD-L2, Mouse IgG1 Fc Tag with a linear range of 10-156 ng/mL (Routinely tested).

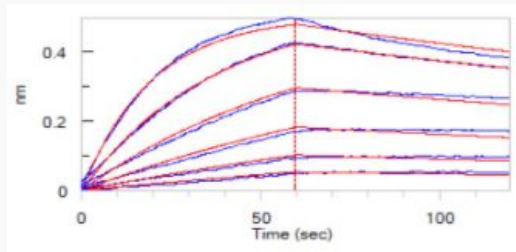
Tel: 1-631-559-9269 1-516-512-3133

Email: info@creative-biomart.com Fax: 1-631-938-8127


45-1 Ramsey Road, Shirley, NY 11967, USA

**Bioactivity-BLI of
PDCD1-892HL**


Loaded Human PD-1, His Tag, low endotoxin (HPLC-verified) on HIS1K Biosensor, can bind Human PD-L1, Fc Tag (HPLC-verified) with an affinity constant of 23.3 nM as determined in BLI assay (ForteBio Octet Red96e) (QC tested).

**Bioactivity-BLI of
PDCD1-892HL**

Loaded Human PD-1, His Tag, low endotoxin (HPLC-verified) on HIS1K Biosensor, can bind Human PD-L2, Fc Tag (HPLC-verified) with an affinity constant of 15.7 nM as determined in BLI assay (ForteBio Octet Red96e) (QC tested).

 Tel: 1-631-559-9269 1-516-512-3133

 Email: info@creative-biomart.com  Fax: 1-631-938-8127

 45-1 Ramsey Road, Shirley, NY 11967, USA