

Recombinant Human PDCD10 Protein, Myc/DDK-tagged, C13 and N15-labeled

Cat. No. PDCD10-2026H **Lot. No.** (See product label)

SPECIFICATION

Product Overview

PDCD10 MS Standard C13 and N15-labeled recombinant protein (NP_009148) with a C-terminal MYC/DDK tag, was expressed in HEK293 cells.

Species

Human

Source

HEK293

Description

This gene encodes an evolutionarily conserved protein associated with cell apoptosis. The protein interacts with the serine/threonine protein kinase MST4 to modulate the extracellular signal-regulated kinase (ERK) pathway. It also interacts with and is phosphorylated by serine/threonine kinase 25, and is thought to function in a signaling pathway essential for vascular development. Mutations in this gene are one cause of cerebral cavernous malformations, which are vascular malformations that cause seizures and cerebral hemorrhages. Multiple alternatively spliced variants, encoding the same protein, have been identified.

Molecular Mass

24.7 kDa

AA Sequence

MRMTMEEMKNEAETTSMVSMPLYAVMYPVFNELERVNLSAAQTLRAAFIKAKEKPNP
GLTQDIIMKILEKKSVEVNFTESSLRMAADDVEEYMIERPEPEFQDLNEKARALKQILS
KIPDEINDRVRFLQTIKDIASAIKELLDTVNNVFKKYQYQNRRALEHQKKEFVKYSKSF
SDTLKTYFKDGGKAINVFSANRLIHQTNLILQTFKTVATRTRPLEQKLISEEDLAANDIL
DYKDDDDKV

 Tel: 1-631-559-9269 1-516-512-3133

 Email: info@creative-biomart.com  Fax: 1-631-938-8127

 45-1 Ramsey Road, Shirley, NY 11967, USA

Purity	> 80% as determined by SDS-PAGE and Coomassie blue staining
Stability	Stable for 3 months from receipt of products under proper storage and handling conditions.
Storage	Store at -80 centigrade. Avoid repeated freeze-thaw cycles.
Concentration	50 µg/mL as determined by BCA
Storage Buffer	100 mM glycine, 25 mM Tris-HCl, pH 7.3.

GENE INFORMATION

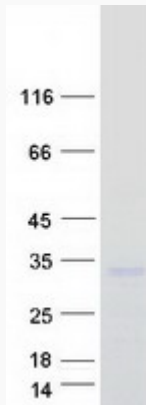
Gene Name	PDCD10 programmed cell death 10 [Homo sapiens (human)]
Official Symbol	PDCD10
Synonyms	PDCD10; programmed cell death 10; CCM3, cerebral cavernous malformations 3; programmed cell death protein 10; TFAR15; apoptosis-related protein 15; TF-1 cell apoptosis-related protein 15; cerebral cavernous malformations 3 protein; CCM3; MGC1212; MGC24477;
Gene ID	11235
mRNA Refseq	NM_007217
Protein Refseq	NP_009148
MIM	609118
UniProt ID	Q9BUL8

 Tel: 1-631-559-9269 1-516-512-3133

 Email: info@creative-biomart.com  Fax: 1-631-938-8127

 45-1 Ramsey Road, Shirley, NY 11967, USA

SDS-PAGE



 Tel: 1-631-559-9269 1-516-512-3133

 Email: info@creative-biomart.com  Fax: 1-631-938-8127

 45-1 Ramsey Road, Shirley, NY 11967, USA