

# Recombinant Full Length Human PDCD6 Protein, C-Flag-tagged

**Cat. No.** PDCD6-1650HFL    **Lot. No.** (See product label)

## SPECIFICATION

<b>Product Overview</b>	Recombinant Full Length Human PDCD6 Protein, fused to Flag-tag at C-terminus, was expressed in Mammalian cells.
<b>Species</b>	Human
<b>Source</b>	Mammalian Cells
<b>Description</b>	This gene encodes a calcium-binding protein belonging to the penta-EF-hand protein family. Calcium binding is important for homodimerization and for conformational changes required for binding to other protein partners. This gene product participates in T cell receptor-, Fas-, and glucocorticoid-induced programmed cell death. In mice deficient for this gene product, however, apoptosis was not blocked suggesting this gene product is functionally redundant. Alternatively spliced transcript variants encoding multiple isoforms have been observed for this gene, and a pseudogene of this gene is also located on the short arm of chromosome 5.
<b>Form</b>	25 mM Tris HCl, pH 7.3, 100 mM glycine, 10% glycerol.
<b>Molecular Mass</b>	21.7 kDa
<b>AA Sequence</b>	MAAYSYPGPGAGPGPAAGAALPDQSFLWNVFRVVDKDRSGVISDTELQQALSNG TWTPFNPVTVRSIIS MFDRENKAGVNFSEFTGVWKYITDWQNVFRTYDRDNSGMID KNELKQALSGFGYRLSDQFHDILIRKFDR QGRGQIAFDDFIQGCIVLQRLTDIFRRYDTDQDGIQVSYEQYLSMVFSIVTRTRPLE

 Tel: 1-631-559-9269    1-516-512-3133

 Email: [info@creative-biomart.com](mailto:info@creative-biomart.com)     Fax: 1-631-938-8127

 45-1 Ramsey Road, Shirley, NY 11967, USA

QKLISEEDLAANDILDYKDDDDKV

**Purity** > 80% as determined by SDS-PAGE and Coomassie blue staining.

**Stability** Stable for 12 months from the date of receipt of the product under proper storage and handling conditions. Avoid repeated freeze-thaw cycles.

**Storage** Store at -80 centigrade.

**Concentration** >50 ug/mL as determined by microplate BCA method.

**Preparation** Recombinant protein was captured through anti-DDK affinity column followed by conventional chromatography steps.

**Protein Families** Druggable Genome

**Full Length** Full L.

## GENE INFORMATION

**Gene Name** [PDCD6 programmed cell death 6 \[ Homo sapiens \(human\) \]](#)

**Official Symbol** [PDCD6](#)

**Synonyms** ALG2; ALG-2; PEF1B

**Gene ID** [10016](#)

**mRNA Refseq** [NM\\_013232.4](#)

**Protein Refseq** [NP\\_037364.1](#)

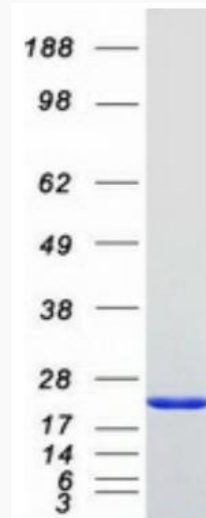
 Tel: 1-631-559-9269 1-516-512-3133

 Email: [info@creative-biomart.com](mailto:info@creative-biomart.com)  Fax: 1-631-938-8127

 45-1 Ramsey Road, Shirley, NY 11967, USA

**MIM** 601057

**UniProt ID** O75340



Coomassie blue staining of purified PDCD6 protein.

 Tel: 1-631-559-9269 1-516-512-3133

 Email: [info@creative-biomart.com](mailto:info@creative-biomart.com)  Fax: 1-631-938-8127

 45-1 Ramsey Road, Shirley, NY 11967, USA