

Recombinant Human Phosphodiesterase 10A, GST-tagged

Cat. No. PDE10A-440H Lot. No. (See product label)

SPECIFICATION

Product Overview	Recombinant Human PDE10A, full length with N-terminal GST tag expressed in a <i>Baculovirus infected Sf9 cell</i> expression system. MW = 116kDa.
Species	Human
Source	Sf9 Cells
Description	Phosphodiesterase 10A is an enzyme that in humans is encoded by the PDE10A gene.
Purity	>60%.
Application	Useful for the study of enzyme kinetics, screening inhibitors, and selectivity profiling.
Formulated In	25 mM Tris-HCl, pH 8.0, 100 mM NaCl, 0.05% Tween-20, 30% glycerol, and 3 mM DTT.
Stability	>6 months at -80°C.
Full Length	Full L.

GENE INFORMATION

Gene Name	PDE10A phosphodiesterase 10A [Homo sapiens]
------------------	---------------------------------------------------------------

 Tel: 1-631-559-9269 1-516-512-3133

 Email: info@creative-biomart.com  Fax: 1-631-938-8127

 45-1 Ramsey Road, Shirley, NY 11967, USA

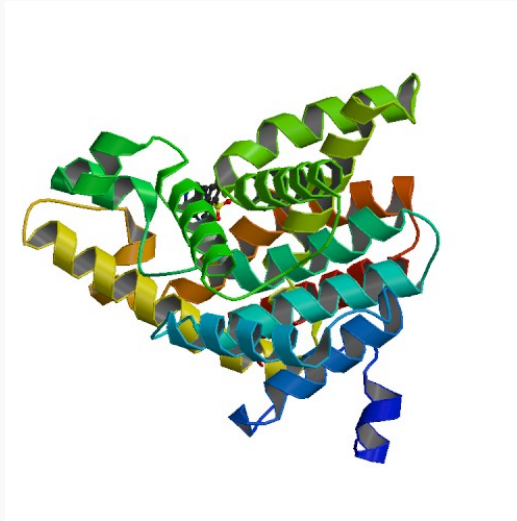
Synonyms	PDE10A; phosphodiesterase 10A; FLJ11894; FLJ25677; HSPDE10A; OTTHUMP00000017586; phosphodiesterase 10A1 (PDE10A1); dJ416F21.1 (phosphodiesterase 10A); EC 3.1.4.17; EC 3.1.4.35
Gene ID	10846
mRNA Refseq	NM_001130690
Protein Refseq	NP_001124162
MIM	610652
UniProt ID	Q9Y233
Chromosome Location	6q26
Pathway	Progesterone-mediated oocyte maturation; Purine metabolism; Signaling by GPCR
Function	3",5"-cyclic-GMP phosphodiesterase activity; cAMP binding; cGMP binding; hydrolase activity; magnesium ion binding; nucleotide binding; zinc ion binding

 Tel: 1-631-559-9269 1-516-512-3133

 Email: info@creative-biomart.com  Fax: 1-631-938-8127

 45-1 Ramsey Road, Shirley, NY 11967, USA

PDB rendering based
on 2o8h.



 Tel: 1-631-559-9269 1-516-512-3133

 Email: info@creative-biomart.com  Fax: 1-631-938-8127

 45-1 Ramsey Road, Shirley, NY 11967, USA