

Recombinant Human PDE1C Protein (Arg284-Asp630), N-His tagged

Cat. No. PDE1C-4833H Lot. No. (See product label)

SPECIFICATION

Product Overview	Recombinant human PDE1C (Arg284-Asp630) fused with the N-His tag was expressed in E. coli.
Species	Human
Source	E.coli
ProteinLength	Arg284-Asp630
Form	Lyophilized powder/frozen liquid
Molecular Mass	41.21 kDa
Purity	>90% as determined by SDS-PAGE.
Notes	For research use only.
Storage	Use a manual defrost freezer and avoid repeated freeze thaw cycles. Store at 2 to 8 centigrade for one week. Store at -20 to -80 centigrade for twelve months from the date of receipt.
Storage Buffer	0.01M PBS, pH 7.4, 0.02% NLS
Reconstitution	Reconstitute in sterile water for a stock solution.

 Tel: 1-631-559-9269 1-516-512-3133

 Email: info@creative-biomart.com  Fax: 1-631-938-8127

 45-1 Ramsey Road, Shirley, NY 11967, USA

Shipping They are shipped out with dry ice/blue ice unless customers require otherwise.

GENE INFORMATION

Gene Name PDE1C phosphodiesterase 1C, calmodulin-dependent 70kDa [Homo sapiens (human)]

Official Symbol PDE1C

Synonyms PDE1C; phosphodiesterase 1C, calmodulin-dependent 70kDa; phosphodiesterase 1C, calmodulin dependent (70kD); calcium/calmodulin-dependent 3,5-cyclic nucleotide phosphodiesterase 1C; Hcam3; hCam-3; cam-PDE 1C; Human 3,5 cyclic nucleotide phosphodiesterase (HSPDE1C1A);

Gene ID 5137

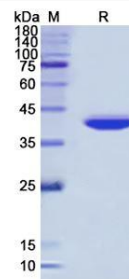
mRNA Refseq NM_001191056

Protein Refseq NP_001177985

MIM 602987

UniProt ID Q14123

SDS-PAGE



 Tel: 1-631-559-9269 1-516-512-3133

 Email: info@creative-biomart.com  Fax: 1-631-938-8127

 45-1 Ramsey Road, Shirley, NY 11967, USA