

Recombinant Human PDE1C protein, His-tagged

Cat. No. PDE1C-7843H Lot. No. (See product label)

SPECIFICATION

Product Overview	Recombinant Human PDE1C protein(284-634 aa), fused with N-terminal His tag, was expressed in E.coli.
Species	Human
Source	E.coli
ProteinLength	284-634 aa
Form	The purified protein was lyophilized from sterile phosphate-buffered saline (PBS: 58 mM Na ₂ HPO ₄ , 17 mM NaH ₂ PO ₄ , 68 mM NaCl, pH 7.4). Prior to lyophilization, 5% (w/v) trehalose and 5% (w/v) mannitol were incorporated as cryoprotective excipients.
AASequence	RSDPAILYNDRSVLENHHLSAAYRLLQDDEEMNILINLSKDDWREFRTLVIEMVMATD MSCHFQQIKAMKTALQQPEAIEKPKALSMLHTADISHPAKAWDLHHRWTMSLLEEF FRQGDREAELGLPFSPLCDRKSTMVAQSQVGFIDFIVEPTFTVLTDMTTEKIVSPLIDE TSQTGGTGQRRSSLNSISSSDAKRSGVKTSVSGSEGSAPINNSVISVDYKSFKATWTEV VHINRERWRAKVPKEEKAKKEAEEKARMAAEEQQKEMEAKSQAEEGASGKAEKKT SGETKNQVNGTRANKSDNPRGKNSKAEEKSSGEQQQNGDFKDGKKNKTDKKDHSNI GNDSKKTDDDSQE
Purity	85%, by SDS-PAGE with Coomassie Brilliant Blue staining.
Storage	Store at 2-8°C for 1-2 weeks. Aliquot and store at -20°C to -80°C for up to 3 months,

 Tel: 1-631-559-9269 1-516-512-3133

 Email: info@creative-biomart.com  Fax: 1-631-938-8127

 45-1 Ramsey Road, Shirley, NY 11967, USA

reconstitution with sterile water and addition of an equal volume of glycerol. Avoid repeat freeze-thaw cycles.

Reconstitution

Dissolve the product in 200 µl sterile water to achieve a working concentration of 0.25 g/µl. If experimental compatibility allows, mix the aqueous solution with an equal volume of glycerol (1:1 ratio) after initial reconstitution.

GENE INFORMATION

Gene Name PDE1C phosphodiesterase 1C, calmodulin-dependent 70kDa [Homo sapiens]

Official Symbol PDE1C

Synonyms

PDE1C; phosphodiesterase 1C, calmodulin-dependent 70kDa; phosphodiesterase 1C, calmodulin dependent (70kD); calcium/calmodulin-dependent 3,5-cyclic nucleotide phosphodiesterase 1C; Hcam3; hCam-3; cam-PDE 1C; Human 3,5 cyclic nucleotide phosphodiesterase (HSPDE1C1A);

Gene ID 5137

mRNA Refseq NM_001191056

Protein Refseq NP_001177985

MIM 602987

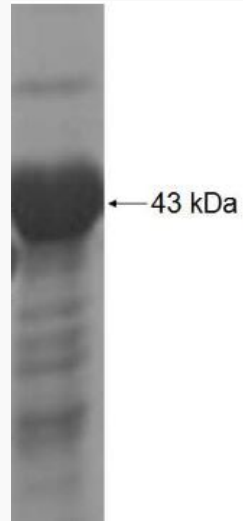
UniProt ID Q14123

 Tel: 1-631-559-9269 1-516-512-3133

 Email: info@creative-biomart.com  Fax: 1-631-938-8127

 45-1 Ramsey Road, Shirley, NY 11967, USA

SDS-PAGE



 Tel: 1-631-559-9269 1-516-512-3133

 Email: info@creative-biomart.com  Fax: 1-631-938-8127

 45-1 Ramsey Road, Shirley, NY 11967, USA