

## Recombinant Human SOD2 Protein

Cat. No. PDE2A-145H Lot. No. (See product label)

### SPECIFICATION

<b>Product Overview</b>	Recombinant human SOD2/Mn-SOD protein (25-222) without tag was expressed in E. coli.
<b>Species</b>	Human
<b>Source</b>	E.coli
<b>ProteinLength</b>	25-222
<b>Description</b>	This gene is a member of the iron/manganese superoxide dismutase family. It encodes a mitochondrial protein that forms a homotetramer and binds one manganese ion per subunit. This protein binds to the superoxide byproducts of oxidative phosphorylation and converts them to hydrogen peroxide and diatomic oxygen. Mutations in this gene have been associated with idiopathic cardiomyopathy (IDC), premature aging, sporadic motor neuron disease, and cancer. Alternative splicing of this gene results in multiple transcript variants. A related pseudogene has been identified on chromosome 1.
<b>Form</b>	Lyophilized
<b>Molecular Mass</b>	22.3 kDa
<b>Purity</b>	≥97% estimated by SDS-PAGE
<b>Stability</b>	≥ 6 months

 Tel: 1-631-559-9269 1-516-512-3133

 Email: [info@creative-biomart.com](mailto:info@creative-biomart.com)  Fax: 1-631-938-8127

 45-1 Ramsey Road, Shirley, NY 11967, USA

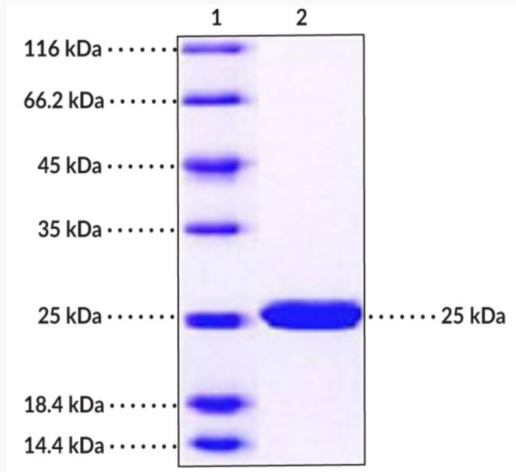
<b>Storage</b>	At -80 centigrade.
<b>Storage Buffer</b>	Lyophilized from sterile PBS, pH 7.5
<b>GENE INFORMATION</b>	
<b>Gene Name</b>	SOD2 superoxide dismutase 2 [ Homo sapiens (human) ]
<b>Official Symbol</b>	SOD2
<b>Synonyms</b>	SOD2; superoxide dismutase 2; IPOB; IPO-B; MNSOD; MVCD6; GCInc1; Mn-SOD; superoxide dismutase [Mn], mitochondrial; Mn superoxide dismutase; epididymis secretory sperm binding protein; gastric cancer-associated lncRNA 1; indophenoloxidase B; manganese-containing superoxide dismutase; manganese-superoxide dismutase; superoxide dismutase 2, mitochondrial; EC 1.15.1.1
<b>Gene ID</b>	6648
<b>mRNA Refseq</b>	NM_000636
<b>Protein Refseq</b>	NP_000627
<b>MIM</b>	147460
<b>UniProt ID</b>	P04179

 Tel: 1-631-559-9269 1-516-512-3133

 Email: [info@creative-biomart.com](mailto:info@creative-biomart.com)  Fax: 1-631-938-8127

 45-1 Ramsey Road, Shirley, NY 11967, USA

**SDS-PAGE Analysis  
of SOD2**



Lane 1: MW Markers

Lane 2: SOD2/Mn-SOD (human, recombinant)

 Tel: 1-631-559-9269 1-516-512-3133

 Email: [info@creative-biomart.com](mailto:info@creative-biomart.com)  Fax: 1-631-938-8127

 45-1 Ramsey Road, Shirley, NY 11967, USA