

## Recombinant Human PDE3A Protein, His/GST-tagged

Cat. No. PDE3A-018H Lot. No. (See product label)

### SPECIFICATION

<b>Product Overview</b>	Recombinant human N-terminal His-GST-tagged PDE3A protein (669-1141) was expressed in insect cells.
<b>Species</b>	Human
<b>Source</b>	Insect Cells
<b>ProteinLength</b>	669-1141
<b>Description</b>	<p>This gene encodes a member of the cGMP-inhibited cyclic nucleotide phosphodiesterase (cGI-PDE) family. cGI-PDE enzymes hydrolyze both cAMP and cGMP, and play critical roles in many cellular processes by regulating the amplitude and duration of intracellular cyclic nucleotide signals. The encoded protein mediates platelet aggregation and also plays important roles in cardiovascular function by regulating vascular smooth muscle contraction and relaxation. Inhibitors of the encoded protein may be effective in treating congestive heart failure. Alternatively spliced transcript variants encoding multiple isoforms have been observed for this gene.</p>
<b>Form</b>	Lyophilized
<b>Molecular Mass</b>	81.7 kDa
<b>Endotoxin</b>	<1.0 EU/ µg, determined by the LAL endotoxin assay.

 Tel: 1-631-559-9269 1-516-512-3133

 Email: [info@creative-biomart.com](mailto:info@creative-biomart.com)  Fax: 1-631-938-8127

 45-1 Ramsey Road, Shirley, NY 11967, USA

<b>Purity</b>	≥90% as determined by SDS-PAGE
<b>Stability</b>	≥ 6 months
<b>Storage</b>	At -80 centigrade.
<b>Storage Buffer</b>	Sterile 20 mM Tris, pH 7.4, with 500 mM sodium chloride and 10% glycol, 3 mM DTT

## GENE INFORMATION

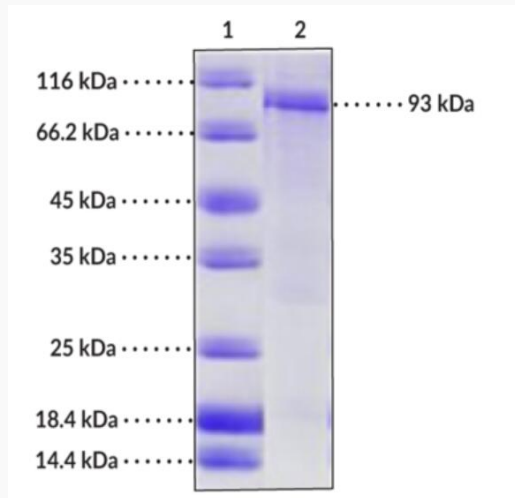
<b>Gene Name</b>	PDE3A phosphodiesterase 3A [ Homo sapiens (human) ]
<b>Official Symbol</b>	PDE3A
<b>Synonyms</b>	PDE3A; phosphodiesterase 3A; HTNB; CGI-PDE; CGI-PDE A; CGI-PDE-A; cGMP-inhibited 3',5'-cyclic phosphodiesterase A; cAMP phosphodiesterase, myocardial cGMP-inhibited; cyclic GMP-inhibited phosphodiesterase A; phosphodiesterase 3A, cGMP-inhibited; EC 3.1.4.17
<b>Gene ID</b>	5139
<b>mRNA Refseq</b>	NM_000921
<b>Protein Refseq</b>	NP_000912
<b>MIM</b>	123805
<b>UniProt ID</b>	Q14432

 Tel: 1-631-559-9269 1-516-512-3133

 Email: [info@creative-biomart.com](mailto:info@creative-biomart.com)  Fax: 1-631-938-8127

 45-1 Ramsey Road, Shirley, NY 11967, USA

### SDS-PAGE Analysis of PDE3A



Lane 1: MW Markers

Lane 2: PDE3A

This protein consists of 170 amino acids and has a calculated molecular weight of 81.7 kDa. By SDS-PAGE, under reducing conditions, the molecular mass of the protein is 93 kDa due to apparent post-translational modifications.

Tel: 1-631-559-9269 1-516-512-3133

Email: [info@creative-biomart.com](mailto:info@creative-biomart.com) Fax: 1-631-938-8127

45-1 Ramsey Road, Shirley, NY 11967, USA