

Recombinant Human PDE3A Protein, His/GST-tagged

Cat. No. PDE3A-01H Lot. No. (See product label)

SPECIFICATION

Product Overview	Recombinant human PDE3A protein (669-1141) with a N-terminus His/GST-tag was expressed in insect cells.
Species	Human
Source	Insect Cells
ProteinLength	669-1141
Description	This gene encodes a member of the cGMP-inhibited cyclic nucleotide phosphodiesterase (cGI-PDE) family. cGI-PDE enzymes hydrolyze both cAMP and cGMP, and play critical roles in many cellular processes by regulating the amplitude and duration of intracellular cyclic nucleotide signals. The encoded protein mediates platelet aggregation and also plays important roles in cardiovascular function by regulating vascular smooth muscle contraction and relaxation. Inhibitors of the encoded protein may be effective in treating congestive heart failure. Alternatively spliced transcript variants encoding multiple isoforms have been observed for this gene.
Form	Lyophilized from sterile 20 mM Tris, pH 7.4, with 500 mM sodium chloride and 10% glycol, 3 mM DTT
Molecular Mass	81.7 kDa
Endotoxin	<1.0 EU/μg, determined by the LAL endotoxin assay

 Tel: 1-631-559-9269 1-516-512-3133

 Email: info@creative-biomart.com  Fax: 1-631-938-8127

 45-1 Ramsey Road, Shirley, NY 11967, USA

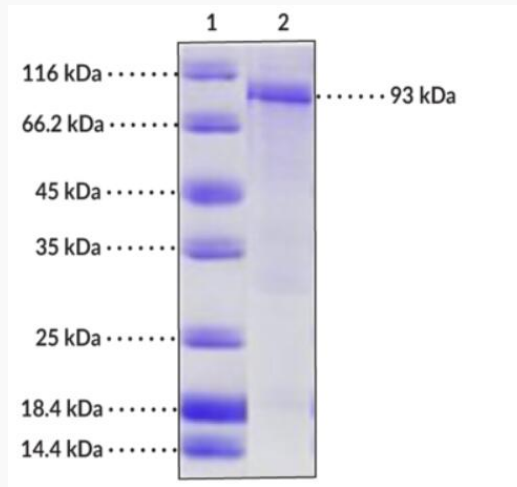
Purity	≥90% estimated by SDS-PAGE
Stability	≥ 1 year
Storage	Store at -80 centigrade
GENE INFORMATION	
Gene Name	PDE3A phosphodiesterase 3A [Homo sapiens (human)]
Official Symbol	PDE3A
Synonyms	PDE3A; phosphodiesterase 3A; HTNB; CGI-PDE; CGI-PDE A; CGI-PDE-A; cGMP-inhibited 3',5'-cyclic phosphodiesterase A; cAMP phosphodiesterase, myocardial cGMP-inhibited; cyclic GMP-inhibited phosphodiesterase A; phosphodiesterase 3A, cGMP-inhibited
Gene ID	5139
mRNA Refseq	NM_000921
Protein Refseq	NP_000912
MIM	123805
UniProt ID	Q14432

 Tel: 1-631-559-9269 1-516-512-3133

 Email: info@creative-biomart.com  Fax: 1-631-938-8127

 45-1 Ramsey Road, Shirley, NY 11967, USA

SDS-PAGE Analysis of PDE3A



Lane 1: MW Markers, Lane 2: PDE3A, SDS-PAGE Analysis of PDE3A. This protein consists of 710 amino acids and has a calculated molecular weight of 81.7 kDa. By SDS-PAGE, under reducing conditions, the molecular mass of the protein is 93 kDa due to apparent post translational modifications.

Tel: 1-631-559-9269 1-516-512-3133

Email: info@creative-biomart.com Fax: 1-631-938-8127

45-1 Ramsey Road, Shirley, NY 11967, USA