

Recombinant Human PDE4B Protein, His/GST-tagged

Cat. No. PDE4B-09H Lot. No. (See product label)

SPECIFICATION

Product Overview	Recombinant human PDE4B protein (1-564) with a N-terminal His/GST-tag was expressed in insect cells.
Species	Human
Source	Insect Cells
ProteinLength	1-564
Description	This gene is a member of the type IV, cyclic AMP (cAMP)-specific, cyclic nucleotide phosphodiesterase (PDE) family. The encoded protein regulates the cellular concentrations of cyclic nucleotides and thereby play a role in signal transduction. Altered activity of this protein has been associated with schizophrenia and bipolar affective disorder. Alternative splicing and the use of alternative promoters results in multiple transcript variants encoding different isoforms.
Form	Lyophilized from sterile 50 mM Tris, pH 8.0, with 100 mM sodium chloride, 0.5 mM GSH, 10% gly, and 0.5 mM PMSF
Molecular Mass	92.2 kDa
Endotoxin	<1.0 EU/μg, determined by the LAL endotoxin assay
Purity	≥80% estimated by SDS-PAGE

 Tel: 1-631-559-9269 1-516-512-3133

 Email: info@creative-biomart.com  Fax: 1-631-938-8127

 45-1 Ramsey Road, Shirley, NY 11967, USA

Stability ≥ 1 year

Storage Store at -80 centigrade

GENE INFORMATION

Gene Name PDE4B phosphodiesterase 4B [Homo sapiens (human)]

Official Symbol PDE4B

Synonyms PDE4B; phosphodiesterase 4B; DPDE4; PDEIVB; cAMP-specific 3',5'-cyclic phosphodiesterase 4B; dunce-like phosphodiesterase E4; phosphodiesterase 4B, cAMP-specific (phosphodiesterase E4 dunce homolog, Drosophila)

Gene ID 5142

mRNA Refseq NM_001037339

Protein Refseq NP_001032416

MIM 600127

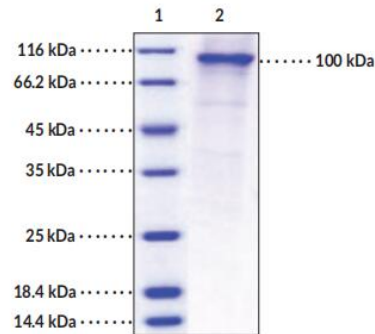
UniProt ID Q07343

 Tel: 1-631-559-9269 1-516-512-3133

 Email: info@creative-biomart.com  Fax: 1-631-938-8127

 45-1 Ramsey Road, Shirley, NY 11967, USA

SDS-PAGE Analysis of PDE4B2



Lane 1: MW Markers, Lane 2: PDE4B2. SDS-PAGE Analysis of PDE4B2. This protein has a calculated molecular weight of 92.2 kDa. It has an apparent molecular weight of approximately 100 kDa by SDS-PAGE under reducing conditions.

Tel: 1-631-559-9269 1-516-512-3133

Email: info@creative-biomart.com Fax: 1-631-938-8127

45-1 Ramsey Road, Shirley, NY 11967, USA