

Recombinant Human PDE4B Protein, His/GST-tagged

Cat. No. PDE4B-147H Lot. No. (See product label)

SPECIFICATION

Product Overview	Recombinant human N-terminal His-GST-tagged PDE4B2 protein (1-564) was expressed in insect cells.
Species	Human
Source	Insect Cells
ProteinLength	1-564
Description	This gene is a member of the type IV, cyclic AMP (cAMP)-specific, cyclic nucleotide phosphodiesterase (PDE) family. The encoded protein regulates the cellular concentrations of cyclic nucleotides and thereby play a role in signal transduction. Altered activity of this protein has been associated with schizophrenia and bipolar affective disorder. Alternative splicing and the use of alternative promoters results in multiple transcript variants encoding different isoforms.
Form	Lyophilized
Molecular Mass	92.2 kDa
Endotoxin	<1.0 EU/μg, determined by the LAL endotoxin assay
Purity	≥80% estimated by SDS-PAGE
Stability	≥ 1 year

 Tel: 1-631-559-9269 1-516-512-3133

 Email: info@creative-biomart.com  Fax: 1-631-938-8127

 45-1 Ramsey Road, Shirley, NY 11967, USA

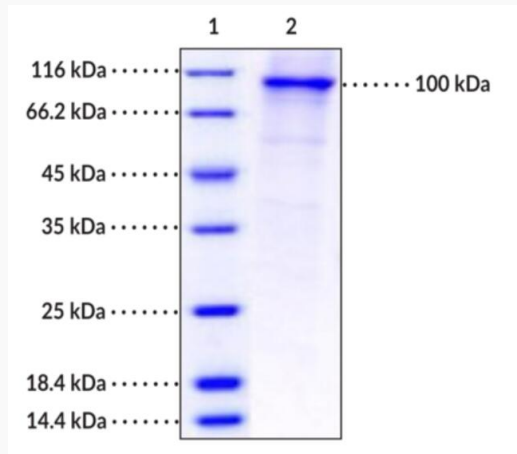
Storage	At -80 centigrade.
Storage Buffer	Lyophilized from sterile 50 mM Tris, pH 8.0, with 100 mM sodium chloride, 0.5 mM GSH, 10% gly, and 0.5 mM PMSF
GENE INFORMATION	
Gene Name	PDE4B phosphodiesterase 4B [Homo sapiens (human)]
Official Symbol	PDE4B
Synonyms	PDE4B; phosphodiesterase 4B; DPDE4; PDEIVB; cAMP-specific 3',5'-cyclic phosphodiesterase 4B; dunce-like phosphodiesterase E4; phosphodiesterase 4B, cAMP-specific (phosphodiesterase E4 dunce homolog, Drosophila); EC 3.1.4.53
Gene ID	5142
mRNA Refseq	NM_001037339
Protein Refseq	NP_001032416
MIM	600127
UniProt ID	Q07343

 Tel: 1-631-559-9269 1-516-512-3133

 Email: info@creative-biomart.com  Fax: 1-631-938-8127

 45-1 Ramsey Road, Shirley, NY 11967, USA

**SDS-PAGE Analysis
of PDE4B**



Lane 1: MW Markers

Lane 2: PDE2A (human, recombinant; aa 215-900)

 Tel: 1-631-559-9269 1-516-512-3133

 Email: info@creative-biomart.com  Fax: 1-631-938-8127

 45-1 Ramsey Road, Shirley, NY 11967, USA