

# Recombinant Human PDE4B Protein, Myc/DDK-tagged, C13 and N15-labeled

Cat. No. PDE4B-1691H Lot. No. (See product label)

## SPECIFICATION

<b>Product Overview</b>	PDE4B MS Standard C13 and N15-labeled recombinant protein (NP_002591) with a C-terminal MYC/DDK tag, was expressed in HEK293 cells.
<b>Species</b>	Human
<b>Source</b>	HEK293
<b>Description</b>	This gene is a member of the type IV, cyclic AMP (cAMP)-specific, cyclic nucleotide phosphodiesterase (PDE) family. The encoded protein regulates the cellular concentrations of cyclic nucleotides and thereby play a role in signal transduction. Altered activity of this protein has been associated with schizophrenia and bipolar affective disorder. Alternative splicing and the use of alternative promoters results in multiple transcript variants encoding different isoforms.
<b>Molecular Mass</b>	83.2 kDa
<b>AA Sequence</b>	MKKSRSVMTVMADDNVKDYFECSLSKSYSSSSNTLGIDLWRGRRCCSGNLQLPPL SQRQSERARTPEGDGISRPTTLPLTTLPSIAITTVSQECFDVENGPPSPGRSPLDPQA SSSAGLVLHATFPGHSQRRESFLYRSDSDYDLSPKAMSRNSSLPSEQHGDDLIVTP FAQVLASLRSVRNNFTILTNLHGTSNKRSPAASQPPVSRVNPQEESYQKLAMETLEE LDWCLDQLETIQTYRSVSEMASNKFKRMLNRELTHLSEMSRSGNQVSEYISNTFLD KQNDVEIPSPTQKDREKKKKQQLMTQISGVKKLMHSSSLNNTSISRFGVNTENEDHL AKELEDLNKWGLNIFNVAGYSHNRPLTCIMYAIFQERDLLKTRISSDTFITYMMTLED

 Tel: 1-631-559-9269 1-516-512-3133

 Email: [info@creative-biomart.com](mailto:info@creative-biomart.com)  Fax: 1-631-938-8127

 45-1 Ramsey Road, Shirley, NY 11967, USA

HYHSDVAYHNSLHAADVAQSTHVLLSTPALDAVFTDLEILAAIFAAAIIHDVDHPGVSN  
 QFLINTNSELALMYNDESVLENHHLAVGFKLLQEEHCDFMNLTKKQRQTLRKMVID  
 MVLATDMSKHMSLLADLKTMTVETKKVTSSGVLLLDNYTDRIQVLRNMVHCADLSNP  
 TKSLELYRQWTRIMEEFFQQGDKERERGMEISPMCDKHTASVEKSQVGFIDYIVH  
 PLWETWADLVQPDAQDILDLTLEDNRNWWYQSMIPQSPSPPLDEQNRDCQGLMEKFQ  
 FELTLDEEDSEGPEKEGEGHSYFSSTKTLVIDPENRDSLGETDIDIATEDKSPVDTT  
 RTRPLEQKLISEEDLAANDILDYKDDDDKV

**Purity** > 80% as determined by SDS-PAGE and Coomassie blue staining

**Stability** Stable for 3 months from receipt of products under proper storage and handling conditions.

**Storage** Store at -80 centigrade. Avoid repeated freeze-thaw cycles.

**Concentration** 50 µg/mL as determined by BCA

**Storage Buffer** 100 mM glycine, 25 mM Tris-HCl, pH 7.3.

## GENE INFORMATION

**Gene Name** PDE4B phosphodiesterase 4B [ *Homo sapiens (human)* ]

**Official Symbol** PDE4B

**Synonyms**

PDE4B; phosphodiesterase 4B, cAMP-specific; DPDE4, phosphodiesterase 4B, cAMP specific (dunce (*Drosophila*) homolog phosphodiesterase E4), phosphodiesterase 4B, cAMP specific (phosphodiesterase E4 dunce homolog, *Drosophila*); cAMP-specific 3,5-cyclic phosphodiesterase 4B; phosphodiesterase E4 dunce homolog (*Drosophila*); PDE32; dunce-like phosphodiesterase E4; cAMP-specific phosphodiesterase-4 B isoform; phosphodiesterase 4B, cAMP-specific

 Tel: 1-631-559-9269 1-516-512-3133

 Email: [info@creative-biomart.com](mailto:info@creative-biomart.com)  Fax: 1-631-938-8127

 45-1 Ramsey Road, Shirley, NY 11967, USA

(phosphodiesterase E4 dunce homolog, Drosophila); DPDE4; PDE4B5; PDEIVB;  
MGC126529; DKFZp686F2182;

**Gene ID** 5142

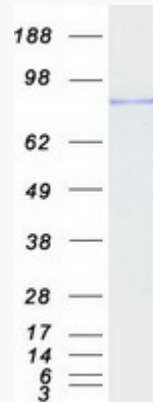
**mRNA Refseq** NM\_002600

**Protein Refseq** NP\_002591

**MIM** 600127

**UniProt ID** Q07343

**SDS-PAGE**



 Tel: 1-631-559-9269 1-516-512-3133

 Email: [info@creative-biomart.com](mailto:info@creative-biomart.com)  Fax: 1-631-938-8127

 45-1 Ramsey Road, Shirley, NY 11967, USA