

Recombinant Human PDE5A Protein (Glu321-Lys482), N-His tagged

Cat. No. PDE5A-5233H Lot. No. (See product label)

SPECIFICATION

Product Overview	Recombinant human PDE5A (Glu321-Lys482) fused with the N-His tag was expressed in E. coli.
Species	Human
Source	E.coli
ProteinLength	Glu321-Lys482
Form	Lyophilized powder/frozen liquid
Molecular Mass	20.87 kDa
Purity	>90% as determined by SDS-PAGE.
Notes	For research use only.
Storage	Use a manual defrost freezer and avoid repeated freeze thaw cycles. Store at 2 to 8 centigrade for one week. Store at -20 to -80 centigrade for twelve months from the date of receipt.
Storage Buffer	0.01M PBS, pH 7.4, 0.02% NLS
Reconstitution	Reconstitute in sterile water for a stock solution.

 Tel: 1-631-559-9269 1-516-512-3133

 Email: info@creative-biomart.com  Fax: 1-631-938-8127

 45-1 Ramsey Road, Shirley, NY 11967, USA

Shipping They are shipped out with dry ice/blue ice unless customers require otherwise.

GENE INFORMATION

Gene Name PDE5A phosphodiesterase 5A, cGMP-specific [Homo sapiens (human)]

Official Symbol PDE5A

Synonyms PDE5A; phosphodiesterase 5A, cGMP-specific; cGMP-specific 3,5-cyclic phosphodiesterase; phosphodiesterase isozyme 5; cGMP-specific phosphodiesterase PDE5A2; cGMP-specific phosphodiesterase type 5A; cGMP-binding cGMP-specific 3,5-cyclic nucleotide phosphodiesterase; CN5A; PDE5; CGB-PDE;

Gene ID 8654

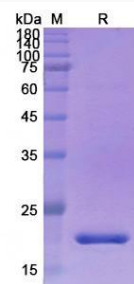
mRNA Refseq NM_001083

Protein Refseq NP_001074

MIM 603310

UniProt ID O76074

SDS-PAGE



 Tel: 1-631-559-9269 1-516-512-3133

 Email: info@creative-biomart.com  Fax: 1-631-938-8127

 45-1 Ramsey Road, Shirley, NY 11967, USA