

Recombinant Human Phosphodiesterase 7A, GST-tagged, Active

Cat. No. PDE7A-481H **Lot. No.** (See product label)

SPECIFICATION

Product Overview	Recombinant human PDE7A (104-end) was expressed by baculovirus in <i>Sf9</i> insect cells using an N-terminal GST tag. MW = 64 kDa.
Species	Human
Source	Sf9 Cells
ProteinLength	104-end a.a.
Description	PDE7A is a member of the phosphodiesterase family of proteins that play a critical role in regulating intracellular levels of cAMP and cGMP. PDE7A is a high-affinity cAMP-specific PDE and is expressed in T cell lines, peripheral blood T lymphocytes, epithelial cell lines, airway and vascular smooth muscle cells, lung fibroblasts, and eosinophils. PDE7 plays a critical role in the regulation of human T cell function and selective PDE7 inhibitors are being examined to treat immunological and inflammatory disorders. PDE7A plays an important role in the regulation of osteoblastic differentiation. PDE7A depletion by RNAi upregulates expression of several osteogenic genes and increases mineralization.
Sequence	104-end.
Applications	PDE Assay.
Storage And Stability	Store product at -70°C. For optimal storage, aliquot target into smaller quantities

 Tel: 1-631-559-9269 1-516-512-3133

 Email: info@creative-biomart.com  Fax: 1-631-938-8127

 45-1 Ramsey Road, Shirley, NY 11967, USA

after centrifugation and store at recommended temperature. For most favorable performance, avoid repeated handling and multiple freeze/thaw cycles.

GENE INFORMATION

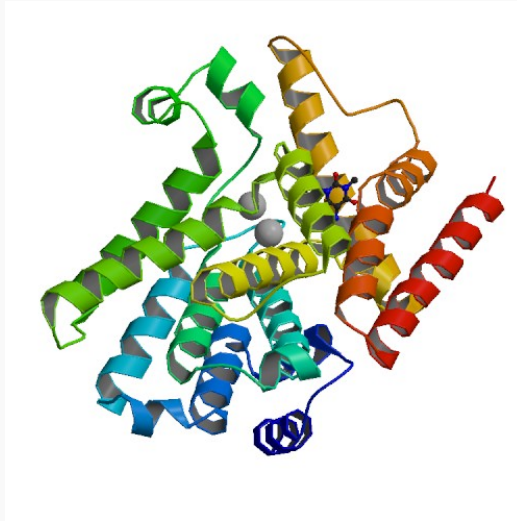
Gene Name	PDE7A phosphodiesterase 7A [Homo sapiens]
Synonyms	PDE7A; phosphodiesterase 7A; HCP1; PDE7; phosphodiesterase isozyme 7; EC 3.1.4.17; High affinity cAMP-specific 3",5"-cyclic phosphodiesterase 7A; TM22
Gene ID	5150
mRNA Refseq	NM_002603
Protein Refseq	NP_002594
MIM	171885
UniProt ID	Q13946
Chromosome Location	8q13
Pathway	Progesterone-mediated oocyte maturation; Purine metabolism
Function	3",5"-cyclic-AMP phosphodiesterase activity; hydrolase activity

 Tel: 1-631-559-9269 1-516-512-3133

 Email: info@creative-biomart.com  Fax: 1-631-938-8127

 45-1 Ramsey Road, Shirley, NY 11967, USA

PDB rendering based
on 1zkl.



 Tel: 1-631-559-9269 1-516-512-3133

 Email: info@creative-biomart.com  Fax: 1-631-938-8127

 45-1 Ramsey Road, Shirley, NY 11967, USA