

Recombinant Human PDGFB Protein (Glu21-Ala241), C-His tagged

Cat. No. PDGFB-4838H Lot. No. (See product label)

SPECIFICATION

Product Overview	Recombinant human PDGFB (Glu21~Ala241) fused with the C-terminal His tag was expressed in E. coli.
Species	Human
Source	E.coli
ProteinLength	Glu21-Ala241
Form	Lyophilized powder/frozen liquid
Molecular Mass	26.22 kDa
Purity	>90% as determined by SDS-PAGE.
Notes	For research use only.
Storage	Use a manual defrost freezer and avoid repeated freeze thaw cycles. Store at 2 to 8 centigrade for one week. Store at -20 to -80 centigrade for twelve months from the date of receipt.
Storage Buffer	Supplied as solution form in 50 mM Tris HCl, pH 7, 150 mM NaCl, 8M urea, pH 7.5 or lyophilized from 50 mM Tris HCl, pH 7, 150 mM NaCl, 8M urea, pH 7.5.

 Tel: 1-631-559-9269 1-516-512-3133

 Email: info@creative-biomart.com  Fax: 1-631-938-8127

 45-1 Ramsey Road, Shirley, NY 11967, USA

Reconstitution Reconstitute in sterile water for a stock solution.

Shipping They are shipped out with dry ice/blue ice unless customers require otherwise.

GENE INFORMATION

Gene Name PDGFB platelet-derived growth factor beta polypeptide [Homo sapiens (human)]

Official Symbol PDGFB

Synonyms

PDGFB; platelet-derived growth factor beta polypeptide; platelet derived growth factor beta polypeptide (simian sarcoma viral (v sis) oncogene homolog), SIS; platelet-derived growth factor subunit B; becaplernin; oncogene SIS; SSV; PDGF-2; PDGF, B chain; PDGF subunit B; proto-oncogene c-Sis; platelet-derived growth factor 2; platelet-derived growth factor B chain; platelet-derived growth factor, B chain; Platelet-derived growth factor, beta polypeptide (oncogene SIS); platelet-derived growth factor beta polypeptide (simian sarcoma viral (v-sis) oncogene homolog); SIS; PDGF2; c-sis; FLJ12858;

Gene ID 5155

mRNA Refseq NM_002608

Protein Refseq NP_002599

MIM 190040

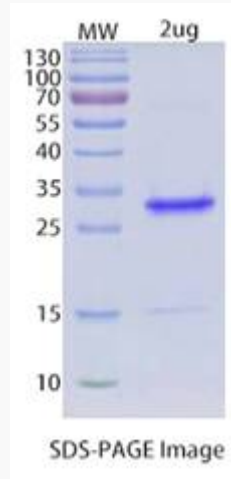
UniProt ID P01127

 Tel: 1-631-559-9269 1-516-512-3133

 Email: info@creative-biomart.com  Fax: 1-631-938-8127

 45-1 Ramsey Road, Shirley, NY 11967, USA

SDS-PAGE



 Tel: 1-631-559-9269 1-516-512-3133

 Email: info@creative-biomart.com  Fax: 1-631-938-8127

 45-1 Ramsey Road, Shirley, NY 11967, USA