

Recombinant Human PDGFB Protein (Ser82-Ser192), N-His tagged

Cat. No. PDGFB-4840H Lot. No. (See product label)

SPECIFICATION

Product Overview	Recombinant human PDGFB (Ser82-Ser192) fused with the N-His tag was expressed in E. coli.
Species	Human
Source	E.coli
ProteinLength	Ser82-Ser192
Form	Lyophilized powder/frozen liquid
Molecular Mass	14.83 kDa
Purity	>90% as determined by SDS-PAGE.
Notes	For research use only.
Storage	Use a manual defrost freezer and avoid repeated freeze thaw cycles. Store at 2 to 8 centigrade for one week. Store at -20 to -80 centigrade for twelve months from the date of receipt.
Storage Buffer	0.01M PBS, pH 7.4, 0.02% NLS
Reconstitution	Reconstitute in sterile water for a stock solution.

 Tel: 1-631-559-9269 1-516-512-3133

 Email: info@creative-biomart.com  Fax: 1-631-938-8127

 45-1 Ramsey Road, Shirley, NY 11967, USA

Shipping They are shipped out with dry ice/blue ice unless customers require otherwise.

GENE INFORMATION

Gene Name PDGFB platelet-derived growth factor beta polypeptide [Homo sapiens (human)]

Official Symbol PDGFB

Synonyms

PDGFB; platelet-derived growth factor beta polypeptide; platelet derived growth factor beta polypeptide (simian sarcoma viral (v sis) oncogene homolog), SIS; platelet-derived growth factor subunit B; becaplermin; oncogene SIS; SSV; PDGF-2; PDGF, B chain; PDGF subunit B; proto-oncogene c-Sis; platelet-derived growth factor 2; platelet-derived growth factor B chain; platelet-derived growth factor, B chain; Platelet-derived growth factor, beta polypeptide (oncogene SIS); platelet-derived growth factor beta polypeptide (simian sarcoma viral (v-sis) oncogene homolog); SIS; PDGF2; c-sis; FLJ12858;

Gene ID 5155

mRNA Refseq NM_002608

Protein Refseq NP_002599

MIM 190040

UniProt ID P01127

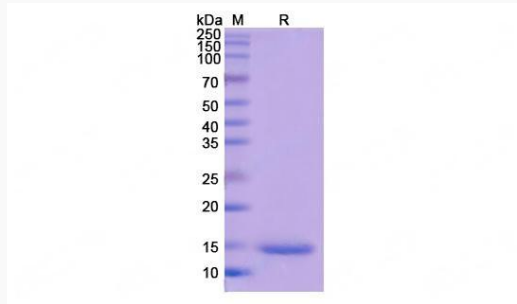
 Tel: 1-631-559-9269 1-516-512-3133

 Email: info@creative-biomart.com  Fax: 1-631-938-8127

 45-1 Ramsey Road, Shirley, NY 11967, USA



SDS-PAGE



Tel: 1-631-559-9269 1-516-512-3133

Email: info@creative-biomart.com Fax: 1-631-938-8127

45-1 Ramsey Road, Shirley, NY 11967, USA