

## Recombinant Human PDGFB Protein, His-tagged

Cat. No. PDGFB-515H Lot. No. (See product label)

### SPECIFICATION

<b>Product Overview</b>	Recombinant Human PDGFB Protein(NP_148937.1) (Ser82-Thr190) was expressed in Yeast with a polyhistidine tag at the N-terminus.
<b>Species</b>	Human
<b>Source</b>	Yeast
<b>ProteinLength</b>	82-190 aa
<b>Form</b>	Lyophilized from sterile PBS, 25 % Glycerol, pH 7.4.
<b>Molecular Mass</b>	The recombinant human PDGFB consists of 124 amino acids and predicts a molecular mass of 14.3 kDa.
<b>Purity</b>	> 95 % as determined by SDS-PAGE
<b>Storage</b>	Store it under sterile conditions at -20°C to -80°C upon receiving. Recommend to aliquot the protein into smaller quantities for optimal storage. Avoid repeated freeze-thaw cycles.
<b>Reconstitution</b>	It is recommended that sterile water be added to the vial to prepare a stock solution of 0.2 ug/ul. Centrifuge the vial at 4°C before opening to recover the entire contents.

### GENE INFORMATION

 Tel: 1-631-559-9269 1-516-512-3133

 Email: [info@creative-biomart.com](mailto:info@creative-biomart.com)  Fax: 1-631-938-8127

 45-1 Ramsey Road, Shirley, NY 11967, USA

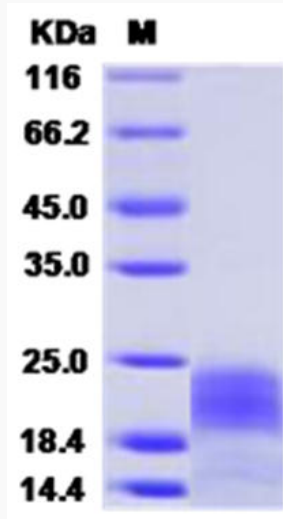
<b>Gene Name</b>	PDGFB platelet-derived growth factor beta polypeptide [ Homo sapiens ]
<b>Official Symbol</b>	PDGFB
<b>Synonyms</b>	PDGFB; platelet-derived growth factor beta polypeptide; platelet derived growth factor beta polypeptide (simian sarcoma viral (v sis) oncogene homolog) , SIS; platelet-derived growth factor subunit B; becaplermin; oncogene SIS; SSV; PDGF-2; PDGF, B chain; PDGF subunit B; proto-oncogene c-Sis; platelet-derived growth factor 2; platelet-derived growth factor B chain; platelet-derived growth factor, B chain; Platelet-derived growth factor, beta polypeptide (oncogene SIS); platelet-derived growth factor beta polypeptide (simian sarcoma viral (v-sis) oncogene homolog); SIS; PDGF2; c-sis; FLJ12858;
<b>Gene ID</b>	5155
<b>mRNA Refseq</b>	NM_002608
<b>Protein Refseq</b>	NP_002599
<b>MIM</b>	190040
<b>UniProt ID</b>	P01127

 Tel: 1-631-559-9269 1-516-512-3133

 Email: [info@creative-biomart.com](mailto:info@creative-biomart.com)  Fax: 1-631-938-8127

 45-1 Ramsey Road, Shirley, NY 11967, USA

SDS-PAGE



 Tel: 1-631-559-9269 1-516-512-3133

 Email: [info@creative-biomart.com](mailto:info@creative-biomart.com)  Fax: 1-631-938-8127

 45-1 Ramsey Road, Shirley, NY 11967, USA