

Recombinant Full Length Human PDGFRA Protein, C-Flag-tagged

Cat. No. PDGFRA-1498HFL **Lot. No.** (See product label)

SPECIFICATION

Product Overview	Recombinant Full Length Human PDGFRA Protein, fused to Flag-tag at C-terminus, was expressed in Mammalian cells.
Species	Human
Source	Mammalian Cells
Description	This gene encodes a cell surface tyrosine kinase receptor for members of the platelet-derived growth factor family. These growth factors are mitogens for cells of mesenchymal origin. The identity of the growth factor bound to a receptor monomer determines whether the functional receptor is a homodimer or a heterodimer, composed of both platelet-derived growth factor receptor alpha and beta polypeptides. Studies suggest that this gene plays a role in organ development, wound healing, and tumor progression. Mutations in this gene have been associated with idiopathic hypereosinophilic syndrome, somatic and familial gastrointestinal stromal tumors, and a variety of other cancers.
Form	25 mM Tris HCl, pH 7.3, 100 mM glycine, 10% glycerol.
Molecular Mass	120.3 kDa
AA Sequence	MGTSHPAFLVLGCLLTGLSLILCQLSLPSILPNENEKVVQLNSSFSLRCFGESEVSWQ YPMSEEESSDVE IRNEENNSGLFVTVLEVSSASAAHTGLYTCYYNHTQTEENELEG RHIYIYVPDPDVAFVPLGMTDYLIV EDDDSAIIPCRITDPETPVTLHNSEGVPASY

 Tel: 1-631-559-9269 1-516-512-3133

 Email: info@creative-biomart.com  Fax: 1-631-938-8127

 45-1 Ramsey Road, Shirley, NY 11967, USA

DSRQGFNGTFTVGPYICEATVKGKKFQTIPFNVYALKA TSELDLEMEALKTVYKSGE
TIVVTCVFNNEVVDLQWTYPGEVKGKGITMLEEIKVPSIKLVYTLTVPEA TVKDSGD
YECAARQATREVKEMKKVTISVHEKGFIEIKPTFSQLEAVNLHEVKHFVVEVRAYPPP
RISWL KNNLTIENLTEITTDVEKIQEIRYRSKLLIRAKEEDSGHYTIVAQNEDAVKSY
TFELLTQVPSSILD L VDDHHGSTGGQTVRCTAEGTPLPDIEWMICKDIKKCNETSW
TILANNVSNIIITEIHSRDRSTVEGRVTF AKVEETIAVRCLAKNLLGAENRELKLVAPT
RSELTVA AAVLVLLVIVIISLIVLVVIWKQKPRYEIRWR VIESISPDGHEIYVDPMLP
YDSRWEFPRDGLVLGRVLGSGAFGKVEGTAYGLSRSQPVMKVAVKMLK PTARS
SEKQALMSELKIMTHLGPLNIVNLLGACTKSGPIYIITEYCFYGD LVNYLHKNRDSFL
SHHPEK PKKELDIFGLNPADESTRSYVILSFENNGDYMDMKQADTTQYVPMLERKE
VSKYSDIQRSLYDRPASYKK KSMLDSEVKNLLSDDNSEGLTLLDLLSFTYQVARGM
EFLASKNCVHRDLAARNVLLAQQKIVKICDFGLA RDIMHDSNYVSKGSTFLPVKWM
APESIFDNLYTTLSDVWSYGILLWEIFSLGGTPYPGMMVDSTFYNKIK SGYRMAKPD
HATSEVYEIMVKCWNSEPEKRPSFYHLSEIVENLLPGQYKKSYEKIHLDLFLKSDHPAV
ARM RVDS DNAYIGVTYKNEEDKLDKDWEGGLDEQRLSADSGYIIPDIDPVPEEEDL
GKRNRHSSQTSEESAI
ETGSSSSTFIKREDETIEDIDMMDDIGIDSSDLVEDSFLTRTRPLEQKLISEEDLAANDI
LDYKDDDDKV

Purity	> 80% as determined by SDS-PAGE and Coomassie blue staining.
Stability	Stable for 12 months from the date of receipt of the product under proper storage and handling conditions. Avoid repeated freeze-thaw cycles.
Storage	Store at -80 centigrade.
Concentration	>50 ug/mL as determined by microplate BCA method.
Preparation	Recombinant protein was captured through anti-DDK affinity column followed by conventional chromatography steps.

 Tel: 1-631-559-9269 1-516-512-3133

 Email: info@creative-biomart.com  Fax: 1-631-938-8127

 45-1 Ramsey Road, Shirley, NY 11967, USA

Protein Families	Druggable Genome, ES Cell Differentiation/IPS, Protein Kinase, Transmembrane
Protein Pathways	Calcium signaling pathway, Colorectal cancer, Cytokine-cytokine receptor interaction, Endocytosis, Focal adhesion, Gap junction, Glioma, MAPK signaling pathway, Melanoma, Pathways in cancer, Prostate cancer, Regulation of actin cytoskeleton
Full Length	Full L.

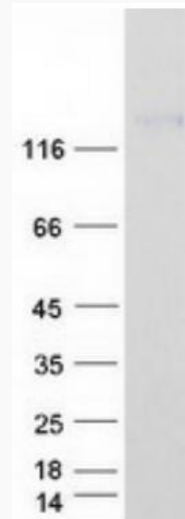
GENE INFORMATION

Gene Name	PDGFRA platelet derived growth factor receptor alpha [Homo sapiens (human)]
Official Symbol	PDGFRA
Synonyms	CD140A; PDGFR2; PDGFR-2
Gene ID	5156
mRNA Refseq	NM_006206.6
Protein Refseq	NP_006197.1
MIM	173490
UniProt ID	P16234

 Tel: 1-631-559-9269 1-516-512-3133

 Email: info@creative-biomart.com  Fax: 1-631-938-8127

 45-1 Ramsey Road, Shirley, NY 11967, USA



Coomassie blue staining of purified PDGFRA protein.

 Tel: 1-631-559-9269 1-516-512-3133

 Email: info@creative-biomart.com  Fax: 1-631-938-8127

 45-1 Ramsey Road, Shirley, NY 11967, USA