

Recombinant Human PDGFRA protein, His-Avi-tagged

Cat. No. PDGFRA-234H **Lot. No.** (See product label)

SPECIFICATION

Product Overview	Recombinant Human PDGFRA protein(P16234)(Gln24-Glu524), fused with C-terminal His and Avi tag, was expressed in HEK293.
Species	Human
Source	HEK293
ProteinLength	Gln24-Glu524
Tag	C-His-Avi
Form	Lyophilized from 0.22µm filtered solution in PBS (pH 7.4). Normally 5% trehalose is added as protectant before lyophilization.
Bio-activity	Immobilized Human PDGF R alpha, His Tag at 0.5ug/ml (100ul/Well) on the plate. Dose response curve for Anti-PDGF R alpha Antibody, hFc Tag with the EC50 of 4.6ng/ml determined by ELISA.
Molecular Mass	The protein has a predicted MW of 59.2 kDa. Due to glycosylation, the protein migrates to 70-83 kDa based on Tris-Bis PAGE result.
Endotoxin	Less than 1EU per µg by the LAL method.
Purity	> 95% as determined by Tris-Bis PAGE;> 95% as determined by HPLC

 Tel: 1-631-559-9269 1-516-512-3133

 Email: info@creative-biomart.com  Fax: 1-631-938-8127

 45-1 Ramsey Road, Shirley, NY 11967, USA

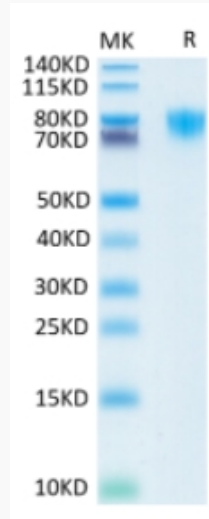
Storage	Reconstituted protein stable at -80°C for 12 months, 4°C for 1 week. Use a manual defrost freezer and avoid repeated freeze-thaw cycles.
Reconstitution	Centrifuge tubes before opening. Reconstituting to a concentration more than 100 µg/ml is recommended. Dissolve the lyophilized protein in distilled water.
GENE INFORMATION	
Gene Name	PDGFRA platelet-derived growth factor receptor, alpha polypeptide [Homo sapiens]
Official Symbol	PDGFRA
Synonyms	PDGFRA; platelet-derived growth factor receptor, alpha polypeptide; platelet-derived growth factor receptor alpha; CD140a; PDGFR2; PDGFR-alpha; PDGF-R-alpha; CD140a antigen; PDGFRA/BCR fusion; CD140 antigen-like family member A; platelet-derived growth factor receptor 2; alpha-type platelet-derived growth factor receptor; rearranged-in-hypereosinophilia-platelet derived growth factor receptor alpha fusion protein; CD140A; PDGFR-2; RHEPDGFRA; MGC74795;
Gene ID	5156
mRNA Refseq	NM_006206
Protein Refseq	NP_006197
MIM	173490
UniProt ID	P16234

 Tel: 1-631-559-9269 1-516-512-3133

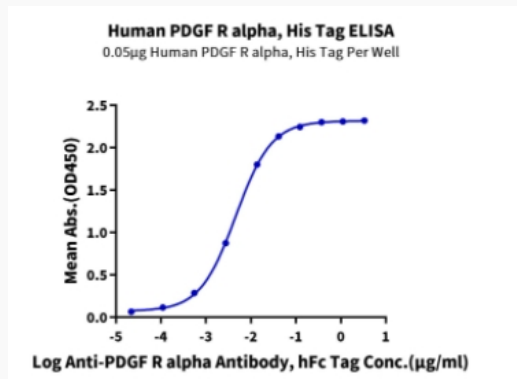
 Email: info@creative-biomart.com  Fax: 1-631-938-8127

 45-1 Ramsey Road, Shirley, NY 11967, USA

Tris-Bis PAGE



ELISA Data



 Tel: 1-631-559-9269 1-516-512-3133

 Email: info@creative-biomart.com  Fax: 1-631-938-8127

 45-1 Ramsey Road, Shirley, NY 11967, USA