

# Active Recombinant Human PDGFRB Protein, His-Myc-tagged, Low Endotoxin

Cat. No. PDGFRB-0269H Lot. No. (See product label)

## SPECIFICATION

<b>Product Overview</b>	Low Endotoxin Active Recombinant Human PDGFRB Protein(P09619-1(S180F))(33-531 aa), fused with a Myc tag and a His tag at the C-terminus, was expressed in HEK293.
<b>Species</b>	Human
<b>Source</b>	HEK293
<b>ProteinLength</b>	33-531 aa
<b>Form</b>	Lyophilized from 0.22 µm filtered solution in PBS, pH 7.4. Normally 5% trehalose and 5% mannitol are added as protectants before lyophilization.
<b>Bio-activity</b>	Immobilized Human PDGFR beta (Myc tag, His tag) at 0.5 µg/mL (100 µL/well) can bind Human PDGFB (hFc tag) with a linear range of 1-5 ng/mL.
<b>Molecular Mass</b>	61.6 kDa
<b>Endotoxin</b>	<0.1 EU/µg protein, LAL method
<b>Purity</b>	>90%, SDS-PAGE
<b>Storage</b>	It is recommended that the protein be aliquoted for optimal storage. Avoid repeated freeze-thaw cycles. Until expiry date, -20°C to -80°C as lyophilized proteins. 3

 Tel: 1-631-559-9269 1-516-512-3133

 Email: [info@creative-biomart.com](mailto:info@creative-biomart.com)  Fax: 1-631-938-8127

 45-1 Ramsey Road, Shirley, NY 11967, USA

months, -20°C to -80°C under sterile conditions after reconstitution.

**Reconstitution**

Briefly centrifuge the tube before opening. Reconstitute at 0.1-0.5 mg/mL in sterile water.

**protein Refseq-Weblink**

[http://www.ncbi.nlm.nih.gov/protein/NP\\_002600.1](http://www.ncbi.nlm.nih.gov/protein/NP_002600.1)

**Unit ID**

P09619

**Unit ID-Weblink**

<https://www.uniprot.org/uniprot/P09619>

## GENE INFORMATION

**Gene Name**

PDGFRB platelet-derived growth factor receptor, beta polypeptide [ Homo sapiens ]

**Official Symbol**

PDGFRB

**Synonyms**

PDGFRB; platelet-derived growth factor receptor, beta polypeptide; PDGFR; platelet-derived growth factor receptor beta; CD140b; JTK12; PDGFR1; PDGFR-beta; PDGFR-beta; CD140 antigen-like family member B; platelet-derived growth factor receptor 1; beta-type platelet-derived growth factor receptor; CD140B; PDGFR-1;

**Gene ID**

5159

**mRNA Refseq**

NM\_002609

**protein Refseq**

NP\_002600

**MIM**

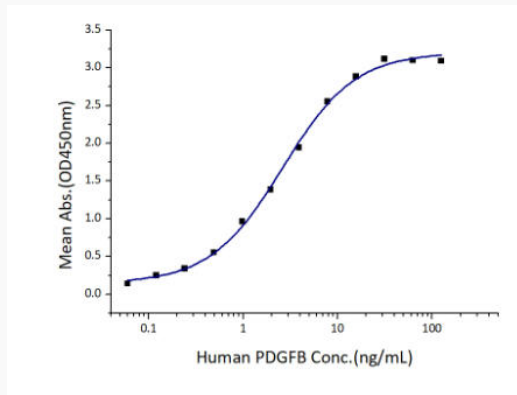
173410

 Tel: 1-631-559-9269 1-516-512-3133

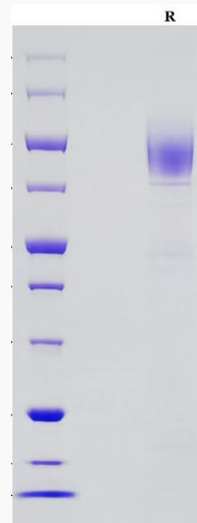
 Email: [info@creative-biomart.com](mailto:info@creative-biomart.com)  Fax: 1-631-938-8127

 45-1 Ramsey Road, Shirley, NY 11967, USA

**Activity**



**SDS-PAGE**



 Tel: 1-631-559-9269 1-516-512-3133

 Email: [info@creative-biomart.com](mailto:info@creative-biomart.com)  Fax: 1-631-938-8127

 45-1 Ramsey Road, Shirley, NY 11967, USA