

## Recombinant Mouse PDGFRB protein, rFc-tagged

Cat. No. PDGFRB-175H Lot. No. (See product label)

### SPECIFICATION

<b>Product Overview</b>	Recombinant Mouse PDGFRB protein(P05622-1)(32-531 aa), fused with a rabbit IgG Fc tag at the C-terminus, was expressed in HEK293.
<b>Species</b>	Mouse
<b>Source</b>	HEK293
<b>ProteinLength</b>	32-531 aa
<b>Form</b>	Lyophilized from 0.22 µm filtered solution in PBS, pH 7.4. Normally 5% trehalose and 5% mannitol are added as protectants before lyophilization.
<b>Molecular Mass</b>	82.4 kDa
<b>Endotoxin</b>	<0.1 EU/µg protein, LAL method
<b>Purity</b>	>90%, SDS-PAGE
<b>Storage</b>	It is recommended that the protein be aliquoted for optimal storage. Avoid repeated freeze-thaw cycles. Until expiry date, -20°C to -80°C as lyophilized proteins. 3 months, -20°C to -80°C under sterile conditions after reconstitution.
<b>Reconstitution</b>	Briefly centrifuge the tube before opening. Reconstitute at 0.1-0.5 mg/mL in sterile water.

 Tel: 1-631-559-9269 1-516-512-3133

 Email: [info@creative-biomart.com](mailto:info@creative-biomart.com)  Fax: 1-631-938-8127

 45-1 Ramsey Road, Shirley, NY 11967, USA

**protein Refseq-Weblink** [http://www.ncbi.nlm.nih.gov/protein/NP\\_001139740.1](http://www.ncbi.nlm.nih.gov/protein/NP_001139740.1)

## GENE INFORMATION

**Gene Name** [Pdgfrb platelet derived growth factor receptor, beta polypeptide \[ Mus musculus \]](#)

**Official Symbol** [PDGFRB](#)

**Synonyms** PDGFRB; platelet derived growth factor receptor, beta polypeptide; platelet-derived growth factor receptor beta; PDGFR-beta; PDGF-R-beta; PDGF beta chain; CD140 antigen-like family member B; platelet-derived growth factor receptor 1; beta platelet-derived growth factor receptor; beta-type platelet-derived growth factor receptor; platelet-derived growth factor receptor beta variant 1; Pdgfr; CD140b; PDGFR-1; AI528809;

**Gene ID** [18596](#)

**mRNA Refseq** [NM\\_001146268](#)

**protein Refseq** [NP\\_001139740](#)

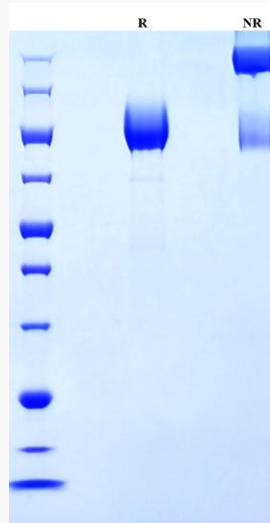
 Tel: 1-631-559-9269 1-516-512-3133

 Email: [info@creative-biomart.com](mailto:info@creative-biomart.com)  Fax: 1-631-938-8127

 45-1 Ramsey Road, Shirley, NY 11967, USA



SDS-PAGE



Tel: 1-631-559-9269 1-516-512-3133

Email: [info@creative-biomart.com](mailto:info@creative-biomart.com) Fax: 1-631-938-8127

45-1 Ramsey Road, Shirley, NY 11967, USA