

## Active Recombinant Human PDGFRB protein, His-tagged

Cat. No. PDGFRB-2187H Lot. No. (See product label)

### SPECIFICATION

<b>Product Overview</b>	Active Recombinant Human PDGFRB protein(NP_002600.1)(Met 1-Lys 531) was expressed in HEK293, with a C-terminal polyhistidine tag.
<b>Species</b>	Human
<b>Source</b>	HEK293
<b>ProteinLength</b>	1-531 aa
<b>Form</b>	Lyophilized from sterile PBS, pH 7.4.
<b>Bio-activity</b>	Measured by its binding ability in a functional ELISA. Immobilized PDGFRβ-His at 10 µg/ml (100 µl/well) can bind Cynomolgus PDGFB, The EC50 of Cynomolgus PDGFB is 3-8 ng/ml.
<b>Molecular Mass</b>	The secreted recombinant human PDGFRβ comprises 510 amino acids and predicts a molecular mass of 57.6 kDa. It migrates as an approximately 95-100 kDa band in SDS-PAGE under reducing conditions.
<b>Endotoxin</b>	< 1.0 EU per µg protein as determined by the LAL method.
<b>Purity</b>	> 90 % as determined by SDS-PAGE
<b>Storage</b>	Store it under sterile conditions at -20°C to -80°C upon receiving. Recommend to aliquot the protein into smaller quantities for optimal storage. Avoid repeated freeze-

 Tel: 1-631-559-9269 1-516-512-3133

 Email: [info@creative-biomart.com](mailto:info@creative-biomart.com)  Fax: 1-631-938-8127

 45-1 Ramsey Road, Shirley, NY 11967, USA

thaw cycles.

**Reconstitution**

It is recommended that sterile water be added to the vial to prepare a stock solution of 0.2 ug/ul. Centrifuge the vial at 4°C before opening to recover the entire contents.

## GENE INFORMATION

**Gene Name** PDGFRB platelet-derived growth factor receptor, beta polypeptide [ Homo sapiens ]

**Official Symbol** PDGFRB

**Synonyms**

PDGFRB; platelet-derived growth factor receptor, beta polypeptide; PDGFR; platelet-derived growth factor receptor beta; CD140b; JTK12; PDGFR1; PDGFR-beta; PDGFR-beta; CD140 antigen-like family member B; platelet-derived growth factor receptor 1; beta-type platelet-derived growth factor receptor; CD140B; PDGFR-1;

**Gene ID** 5159

**mRNA Refseq** NM\_002609

**Protein Refseq** NP\_002600

**MIM** 173410

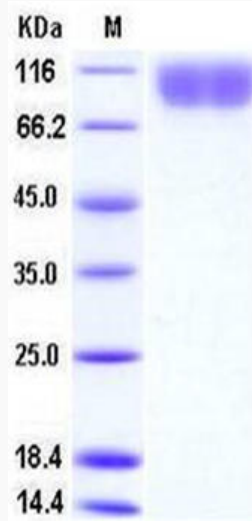
**UniProt ID** P09619

 Tel: 1-631-559-9269 1-516-512-3133

 Email: [info@creative-biomart.com](mailto:info@creative-biomart.com)  Fax: 1-631-938-8127

 45-1 Ramsey Road, Shirley, NY 11967, USA

**SDS-PAGE**



 Tel: 1-631-559-9269 1-516-512-3133

 Email: [info@creative-biomart.com](mailto:info@creative-biomart.com)  Fax: 1-631-938-8127

 45-1 Ramsey Road, Shirley, NY 11967, USA