

Active Recombinant Human PDGFRB protein, hFc&His-tagged

Cat. No. PDGFRB-2657H Lot. No. (See product label)

SPECIFICATION

Product Overview	Active Recombinant Human PDGFR-beta/CD140b(E241D) Protein is produced by HEK293 expression system. The target protein is expressed with sequence (Leu33-Phe530 (Glu241Asp)) of human PDGFRB/CD140b (Accession #NP_002600.1) fused with an Fc, 6xHis tag at the C-terminus.
Species	Human
Source	HEK293
ProteinLength	Leu33-Phe530 (Glu241Asp)
Form	Lyophilized from a 0.22 µm filtered solution of PBS, pH 7.4.
Bio-activity	Measured by its binding ability in a functional ELISA. Immobilized recombinant Human PDGF-B at 2 µg/mL (100 µL/well) can bind recombinant Human PDGFRB. The EC50 of Human PDGFRB is 30.48 ng/mL.
Molecular Mass	110-140 kDa
Endotoxin	< 0.1 EU/µg of the protein by LAL method.
Purity	> 90% by SDS-PAGE.
Storage	Store the lyophilized protein at -20°C to -80 °C for long term. After reconstitution, the protein solution is stable at -20 °C for 3 months, at 2-8 °C for

 Tel: 1-631-559-9269 1-516-512-3133

 Email: info@creative-biomart.com  Fax: 1-631-938-8127

 45-1 Ramsey Road, Shirley, NY 11967, USA

up to 1 week.

Reconstitution Reconstitute to a concentration of 0.1-0.5 mg/mL in sterile distilled water.

GENE INFORMATION

Gene Name PDGFRB platelet-derived growth factor receptor, beta polypeptide [Homo sapiens]

Official Symbol PDGFRB

Synonyms PDGFRB; platelet-derived growth factor receptor, beta polypeptide; PDGFR; platelet-derived growth factor receptor beta; CD140b; JTK12; PDGFR1; PDGFR-beta; PDGFR-beta; CD140 antigen-like family member B; platelet-derived growth factor receptor 1; beta-type platelet-derived growth factor receptor; CD140B; PDGFR-1;

Gene ID 5159

mRNA Refseq NM_002609

Protein Refseq NP_002600

MIM 173410

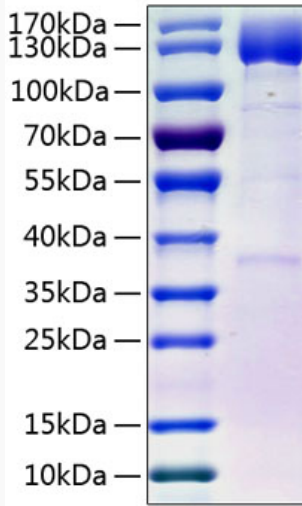
UniProt ID P09619

 Tel: 1-631-559-9269 1-516-512-3133

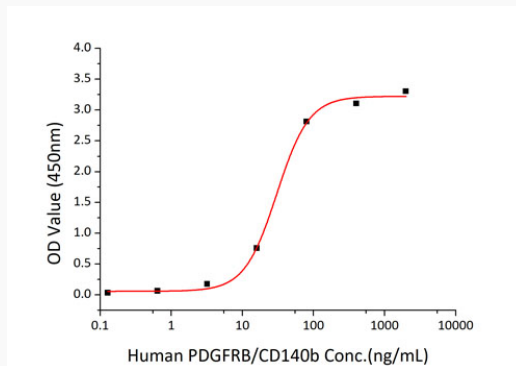
 Email: info@creative-biomart.com  Fax: 1-631-938-8127

 45-1 Ramsey Road, Shirley, NY 11967, USA

SDS-PAGE



Bio-activity



 Tel: 1-631-559-9269 1-516-512-3133

 Email: info@creative-biomart.com  Fax: 1-631-938-8127

 45-1 Ramsey Road, Shirley, NY 11967, USA