

## Recombinant Human PDGFRB Protein (Leu33-Phe530), C-His tagged

Cat. No. PDGFRB-4848H Lot. No. (See product label)

### SPECIFICATION

<b>Product Overview</b>	Recombinant human PDGFRB (Leu33-Phe530) fused with the C-terminal His tag was expressed in E. coli.
<b>Species</b>	Human
<b>Source</b>	E.coli
<b>ProteinLength</b>	Leu33-Phe530
<b>Form</b>	Lyophilized powder/frozen liquid
<b>Molecular Mass</b>	54.78 kDa
<b>Purity</b>	>90% as determined by SDS-PAGE.
<b>Notes</b>	For research use only.
<b>Storage</b>	Use a manual defrost freezer and avoid repeated freeze thaw cycles. Store at 2 to 8 centigrade for one week. Store at -20 to -80 centigrade for twelve months from the date of receipt.
<b>Storage Buffer</b>	Supplied as solution form in PBS or lyophilized from PBS.
<b>Reconstitution</b>	Reconstitute in sterile water for a stock solution.

 Tel: 1-631-559-9269 1-516-512-3133

 Email: [info@creative-biomart.com](mailto:info@creative-biomart.com)  Fax: 1-631-938-8127

 45-1 Ramsey Road, Shirley, NY 11967, USA

**Shipping** They are shipped out with dry ice/blue ice unless customers require otherwise.

## GENE INFORMATION

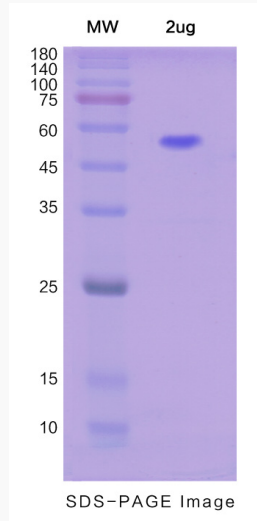
<b>Gene Name</b>	PDGFRB platelet-derived growth factor receptor, beta polypeptide [ Homo sapiens (human) ]
<b>Official Symbol</b>	PDGFRB
<b>Synonyms</b>	PDGFRB; platelet-derived growth factor receptor, beta polypeptide; PDGFR; platelet-derived growth factor receptor beta; CD140b; JTK12; PDGFR1; PDGFR-beta; PDGFR-beta; CD140 antigen-like family member B; platelet-derived growth factor receptor 1; beta-type platelet-derived growth factor receptor; CD140B; PDGFR-1;
<b>Gene ID</b>	5159
<b>mRNA Refseq</b>	NM_002609
<b>Protein Refseq</b>	NP_002600
<b>MIM</b>	173410
<b>UniProt ID</b>	P09619

 Tel: 1-631-559-9269 1-516-512-3133

 Email: [info@creative-biomart.com](mailto:info@creative-biomart.com)  Fax: 1-631-938-8127

 45-1 Ramsey Road, Shirley, NY 11967, USA

**SDS-PAGE**



 Tel: 1-631-559-9269 1-516-512-3133

 Email: [info@creative-biomart.com](mailto:info@creative-biomart.com)  Fax: 1-631-938-8127

 45-1 Ramsey Road, Shirley, NY 11967, USA