

Recombinant Human PDGFRB protein, His-Avi-tagged, Biotinylated

Cat. No. PDGFRB-619HB Lot. No. (See product label)

SPECIFICATION

Product Overview	Biotinylated Recombinant Human PDGFRB protein(P09619)(Leu33-Phe530), fused with C-terminal His and Avi tag, was expressed in HEK293.
Species	Human
Source	HEK293
ProteinLength	Leu33-Phe530
Tag	C-His-Avi
Conjugation/Label	Biotin
Form	Supplied as 0.22µm filtered solution in PBS (pH 7.4).
Bio-activity	Immobilized Anti-PDGF R beta Antibody, hFc Tag at 2ug/ml (100ul/well) on the plate. Dose response curve for Biotinylated Human PDGF R beta, His Tag with the EC50 of 12.5ng/ml determined by ELISA.
Molecular Mass	The protein has a predicted MW of 59 kDa. Due to glycosylation, the protein migrates to 78-115 kDa based on Tris-Bis PAGE result.
Endotoxin	Less than 1EU per µg by the LAL method.

 Tel: 1-631-559-9269 1-516-512-3133

 Email: info@creative-biomart.com  Fax: 1-631-938-8127

 45-1 Ramsey Road, Shirley, NY 11967, USA

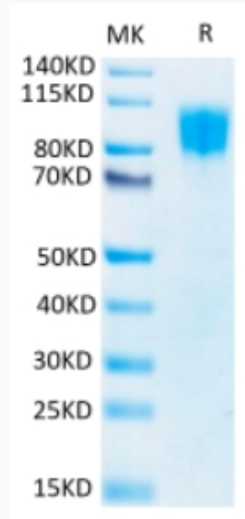
Purity	> 95% as determined by Tris-Bis PAGE;> 95% as determined by HPLC
Storage	Valid for 12 months from date of receipt when stored at -80°C.; Recommend to aliquot the protein into smaller quantities for optimal storage. Please do not repeated freeze-thaw cycles.
Reconstitution	
Conjugation	Biotin
GENE INFORMATION	
Gene Name	PDGFRB platelet-derived growth factor receptor, beta polypeptide [Homo sapiens]
Official Symbol	PDGFRB
Synonyms	PDGFRB; platelet-derived growth factor receptor, beta polypeptide; PDGFR; platelet-derived growth factor receptor beta; CD140b; JTK12; PDGFR1; PDGFR-beta; PDGFR-beta; CD140 antigen-like family member B; platelet-derived growth factor receptor 1; beta-type platelet-derived growth factor receptor; CD140B; PDGFR-1;
Gene ID	5159
mRNA Refseq	NM_002609
Protein Refseq	NP_002600
MIM	173410
UniProt ID	P09619

 Tel: 1-631-559-9269 1-516-512-3133

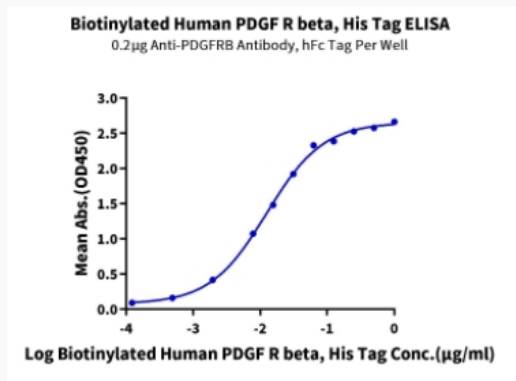
 Email: info@creative-biomart.com  Fax: 1-631-938-8127

 45-1 Ramsey Road, Shirley, NY 11967, USA

Tris-Bis PAGE



ELISA Data



 Tel: 1-631-559-9269 1-516-512-3133

 Email: info@creative-biomart.com  Fax: 1-631-938-8127

 45-1 Ramsey Road, Shirley, NY 11967, USA