

Recombinant Human PDHA1 Protein (Phe30-Ser390), N-His tagged

Cat. No. PDHA1-4853H Lot. No. (See product label)

SPECIFICATION

Product Overview	Recombinant human PDHA1 (Phe30-Ser390) fused with the N-His tag was expressed in E. coli.
Species	Human
Source	E.coli
ProteinLength	Phe30-Ser390
Form	Lyophilized powder/frozen liquid
Molecular Mass	42.54 kDa
Purity	>90% as determined by SDS-PAGE.
Notes	For research use only.
Storage	Use a manual defrost freezer and avoid repeated freeze thaw cycles. Store at 2 to 8 centigrade for one week. Store at -20 to -80 centigrade for twelve months from the date of receipt.
Storage Buffer	0.01M PBS, pH 7.4, 0.02% NLS
Reconstitution	Reconstitute in sterile water for a stock solution.

 Tel: 1-631-559-9269 1-516-512-3133

 Email: info@creative-biomart.com  Fax: 1-631-938-8127

 45-1 Ramsey Road, Shirley, NY 11967, USA

Shipping

They are shipped out with dry ice/blue ice unless customers require otherwise.

GENE INFORMATION

Gene Name PDHA1 pyruvate dehydrogenase (lipoamide) alpha 1 [Homo sapiens (human)]

Official Symbol PDHA1

Synonyms PDHA1; pyruvate dehydrogenase (lipoamide) alpha 1; PDHA; pyruvate dehydrogenase E1 component subunit alpha, somatic form, mitochondrial; PDHE1-A type I; pyruvate dehydrogenase complex, E1-alpha polypeptide 1; PHE1A; PDHCE1A;

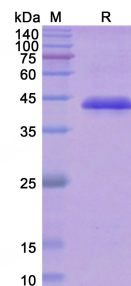
Gene ID 5160

mRNA Refseq NM_000284

Protein Refseq NP_000275

MIM 300502

UniProt ID P08559

SDS-PAGE


 Tel: 1-631-559-9269 1-516-512-3133

 Email: info@creative-biomart.com  Fax: 1-631-938-8127

 45-1 Ramsey Road, Shirley, NY 11967, USA