

Recombinant Human PDHB protein(31-359aa), His-tagged

Cat. No. PDHB-2948H Lot. No. (See product label)

SPECIFICATION

| | |
|-------------------------|--|
| Product Overview | Recombinant Human PDHB protein(P11177)(31-359aa), fused with N-terminal His tag, was expressed in E. coli. |
| Species | Human |
| Source | E.coli |
| ProteinLength | 31-359aa |
| Form | If the delivery form is liquid, the default storage buffer is Tris/PBS-based buffer, 5%-50% glycerol. If the delivery form is lyophilized powder, the buffer before lyophilization is Tris/PBS-based buffer, 6% Trehalose, pH 8.0. |
| Molecular Mass | 41.9 kDa |
| Purity | Greater than 90% as determined by SDS-PAGE. |
| Storage | Store at -20°C/-80°C upon receipt, aliquoting is necessary for mutiple use. Avoid repeated freeze-thaw cycles. |
| Reconstitution | We recommend that this vial be briefly centrifuged prior to opening to bring the contents to the bottom. Please reconstitute protein in deionized sterile water to a concentration of 0.1-1.0 mg/mL. We recommend to add 5-50% of glycerol (final concentration) and aliquot for long-term storage at -20°C/-80°C. |

 Tel: 1-631-559-9269 1-516-512-3133

 Email: info@creative-biomart.com  Fax: 1-631-938-8127

 45-1 Ramsey Road, Shirley, NY 11967, USA

AA Sequence

LQVTVRDAINQGMDEELERDEKVFLLGEEVAQYDGAYKVSRLWKKYGDKRIIDTPI
 SEMGFAGIAVGAAMAGLRPICEFMTFNFSMQAIDQVINSAAKTYYMSSGGLQPPIVF
 RGPNGASAGVAAQHSQCFAAWYGHCPGLKVVSPWNSERDAKGLIKSAIRDNNPVVV
 LENELMYGVPFEFPPEAQSKDFLIPIGKAKIERQGTHITVVSRSRVPVGHCCLEAAAVLS
 KEGVECEVINMRTIRPMDMETIEASVMKTNHLVTVEGGWPQFGVGAEICARIMEGP
 AFNFLDAPAVRVTGADVMPYAKILEDNSIPQVKDIIFAIKKTLLNI

GENE INFORMATION

Gene Name PDHB pyruvate dehydrogenase (lipoamide) beta [Homo sapiens]

Official Symbol PDHB

Synonyms PDHB; pyruvate dehydrogenase (lipoamide) beta; pyruvate dehydrogenase E1 component subunit beta, mitochondrial; pyruvate dehydrogenase, E1 beta polypeptide; PDHBD; PHE1B; PDHE1-B; DKFZp564K0164;

Gene ID 5162

mRNA Refseq NM_000925

Protein Refseq NP_000916

MIM 179060

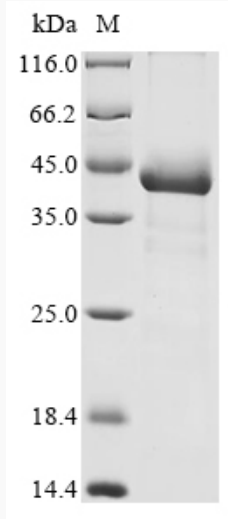
UniProt ID P11177

 Tel: 1-631-559-9269 1-516-512-3133

 Email: info@creative-biomart.com  Fax: 1-631-938-8127

 45-1 Ramsey Road, Shirley, NY 11967, USA

SDS-PAGE



 Tel: 1-631-559-9269 1-516-512-3133

 Email: info@creative-biomart.com  Fax: 1-631-938-8127

 45-1 Ramsey Road, Shirley, NY 11967, USA