

Recombinant Human PDHB Protein (Leu31-Asn341), N-His tagged

Cat. No. PDHB-4855H Lot. No. (See product label)

SPECIFICATION

Product Overview	Recombinant human PDHB (Leu31-Asn341) fused with the N-His tag was expressed in E. coli.
Species	Human
Source	E.coli
ProteinLength	Leu31-Asn341
Form	Lyophilized powder/frozen liquid
Molecular Mass	36.19 kDa
Purity	>90% as determined by SDS-PAGE.
Notes	For research use only.
Storage	Use a manual defrost freezer and avoid repeated freeze thaw cycles. Store at 2 to 8 centigrade for one week. Store at -20 to -80 centigrade for twelve months from the date of receipt.
Storage Buffer	0.01M PBS, pH 7.4, 0.02% NLS
Reconstitution	Reconstitute in sterile water for a stock solution.

 Tel: 1-631-559-9269 1-516-512-3133

 Email: info@creative-biomart.com  Fax: 1-631-938-8127

 45-1 Ramsey Road, Shirley, NY 11967, USA

Shipping They are shipped out with dry ice/blue ice unless customers require otherwise.

GENE INFORMATION

Gene Name PDHB pyruvate dehydrogenase (lipoamide) beta [Homo sapiens (human)]

Official Symbol PDHB

Synonyms PDHB; pyruvate dehydrogenase (lipoamide) beta; pyruvate dehydrogenase E1 component subunit beta, mitochondrial; pyruvate dehydrogenase, E1 beta polypeptide; PDHBD; PHE1B; PDHE1-B; DKFZp564K0164;

Gene ID 5162

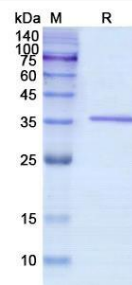
mRNA Refseq NM_000925

Protein Refseq NP_000916

MIM 179060

UniProt ID P11177

SDS-PAGE



 Tel: 1-631-559-9269 1-516-512-3133

 Email: info@creative-biomart.com  Fax: 1-631-938-8127

 45-1 Ramsey Road, Shirley, NY 11967, USA