

## Recombinant Human PDIA4 protein, His-tagged

Cat. No. PDIA4-122H Lot. No. (See product label)

### SPECIFICATION

**Product Overview** Recombinant Human PDIA4 protein(294-645 aa), fused with N-terminal His tag, was expressed in E. coli.

**Species** Human

**Source** E.coli

**ProteinLength** 294-645 aa

**Form** The purified protein was Lyophilized from sterile PBS (58mM Na<sub>2</sub>HPO<sub>4</sub>, 17mM NaH<sub>2</sub>PO<sub>4</sub>, 68mM NaCl, pH7.4). 5 % trehalose and 5 % mannitol are added as protectant before lyophilization.

**Storage** Short-term storage: Store at 2-8°C for (1-2 weeks). Long-term storage: Aliquot and store at -20°C to -80°C for up to 3 months, reconstitution with sterile water and addition of an equal volume of glycerol. Avoid repeat freeze-thaw cycles.

**AA Sequence**

```

KQVQEFLKDGDDVIIIIGVFKGESDPAYQQYQDAANNLREDYKFHHTFSTEIAKFLKVS
QGQLVVMQPEKFQSKYEPRSHMMDVQGSTQDSAIFKDFVLKYALPLVGHRKVSNDA
KRYTRRPLVVVYYSVDFSFDRYAATQFWRSKVLEVAKDFPEYTFIAI DEEDYAGEVK
DLGLSESGEDVNAAILDESGKKFAMEPEEFSDTLREFVTAFFKKGKLPVIKVSQVPV
KNNKGPVKVVVGKTFDSIVMDPKKDVLIIFYAPWCGHCKQLEPVYNSLAKKYKGQK
GLVIAKMDATANDVPSDRYKVEGFPTIYFAPSGDKKNPVKFEFGDRDLEHLSKFIEE
HATKLSRTKEEL
    
```

 Tel: 1-631-559-9269 1-516-512-3133

 Email: [info@creative-biomart.com](mailto:info@creative-biomart.com)  Fax: 1-631-938-8127

 45-1 Ramsey Road, Shirley, NY 11967, USA

**Purity** 85%, by SDS-PAGE with Coomassie Brilliant Blue staining.

## GENE INFORMATION

**Official Symbol** PDIA4

**Synonyms**

PDIA4; protein disulfide isomerase family A, member 4; protein disulfide isomerase associated 4; protein disulfide-isomerase A4; ERP70; ERP72; ER protein 70; ER protein 72; protein disulfide isomerase-associated 4; endoplasmic reticulum resident protein 70; endoplasmic reticulum resident protein 72; protein disulfide isomerase related protein (calcium-binding protein, intestinal-related); ERp-72;

**Gene ID** 9601

**mRNA Refseq** NM\_004911

**Protein Refseq** NP\_004902

**UniProt ID** P13667

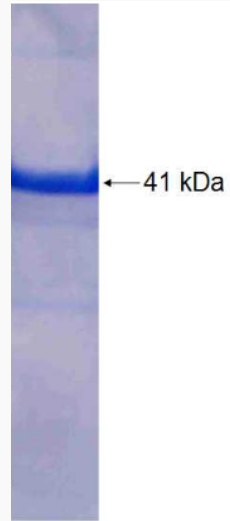
 Tel: 1-631-559-9269 1-516-512-3133

 Email: [info@creative-biomart.com](mailto:info@creative-biomart.com)  Fax: 1-631-938-8127

 45-1 Ramsey Road, Shirley, NY 11967, USA



SDS-PAGE



Tel: 1-631-559-9269 1-516-512-3133

Email: [info@creative-biomart.com](mailto:info@creative-biomart.com) Fax: 1-631-938-8127

45-1 Ramsey Road, Shirley, NY 11967, USA