

Recombinant Human PDP1 Protein (Asn315-Glu537), N-His tagged

Cat. No. PDP1-4965H Lot. No. (See product label)

SPECIFICATION

Product Overview	Recombinant human PDP1 (Asn315-Glu537) fused with the N-His tag was expressed in E. coli.
Species	Human
Source	E.coli
ProteinLength	Asn315-Glu537
Form	Lyophilized powder/frozen liquid
Molecular Mass	28.10 kDa
Purity	>90% as determined by SDS-PAGE.
Notes	For research use only.
Storage	Use a manual defrost freezer and avoid repeated freeze thaw cycles. Store at 2 to 8 centigrade for one week. Store at -20 to -80 centigrade for twelve months from the date of receipt.
Storage Buffer	0.01M PBS, pH 7.4, 0.02% NLS
Reconstitution	Reconstitute in sterile water for a stock solution.

 Tel: 1-631-559-9269 1-516-512-3133

 Email: info@creative-biomart.com  Fax: 1-631-938-8127

 45-1 Ramsey Road, Shirley, NY 11967, USA

Shipping They are shipped out with dry ice/blue ice unless customers require otherwise.

GENE INFORMATION

Gene Name PDP1 pyruvate dehydrogenase phosphatase catalytic subunit 1 [Homo sapiens (human)]

Official Symbol PDP1

Synonyms PDP1; pyruvate dehydrogenase phosphatase catalytic subunit 1; PPM2C, protein phosphatase 2C, magnesium dependent, catalytic subunit; [Pyruvate dehydrogenase [acetyl-transferring]]-phosphatase 1, mitochondrial; PDH; PDP; PDP 1; PDPC 1; pyruvate dehydrogenase phosphatase catalytic subunit 1; pyruvate dehydrogenase (Lipoamide) phosphatase-phosphatase; protein phosphatase 2C, magnesium-dependent, catalytic subunit; PDPC; PPM2C; FLJ32517; FLJ56179; MGC119646;

Gene ID 54704

mRNA Refseq NM_001161778

Protein Refseq NP_001155250

MIM 605993

UniProt ID Q9P0J1

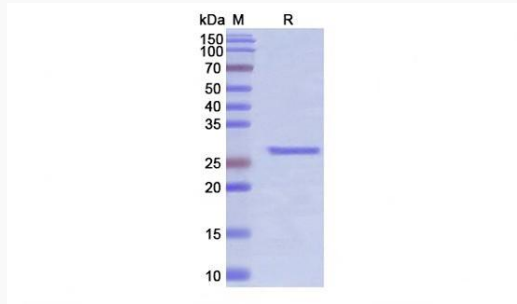
 Tel: 1-631-559-9269 1-516-512-3133

 Email: info@creative-biomart.com  Fax: 1-631-938-8127

 45-1 Ramsey Road, Shirley, NY 11967, USA



SDS-PAGE



Tel: 1-631-559-9269 1-516-512-3133

Email: info@creative-biomart.com Fax: 1-631-938-8127

45-1 Ramsey Road, Shirley, NY 11967, USA