

Recombinant Human PDP1 protein, His & T7-tagged

Cat. No. PDP1-7881H Lot. No. (See product label)

SPECIFICATION

Product Overview	Recombinant Human PDP1 aa. (Asn315~Glu537 (Accession # Q9P0J1)) fused with N-terminal His & T7 tag was produced in E. coli cells.
Species	Human
Source	E.coli
ProteinLength	Asn315~Glu537
Description	<p>Pyruvate dehydrogenase (E1) is one of the three components (E1, E2, and E3) of the large pyruvate dehydrogenase complex. Pyruvate dehydrogenase kinases catalyze phosphorylation of serine residues of E1 to inactivate the E1 component and inhibit the complex. Pyruvate dehydrogenase phosphatases catalyze the dephosphorylation and activation of the E1 component to reverse the effects of pyruvate dehydrogenase kinases. Pyruvate dehydrogenase phosphatase is a heterodimer consisting of catalytic and regulatory subunits. Two catalytic subunits have been reported; one is predominantly expressed in skeletal muscle and another one is much more abundant in the liver. The catalytic subunit, encoded by this gene, is the former, and belongs to the protein phosphatase 2C (PP2C) superfamily. Along with the pyruvate dehydrogenase complex and pyruvate dehydrogenase kinases, this enzyme is located in the mitochondrial matrix. Mutation in this gene causes pyruvate dehydrogenase phosphatase deficiency. Multiple alternatively spliced transcript variants encoding different isoforms have been identified.</p>

 Tel: 1-631-559-9269 1-516-512-3133

 Email: info@creative-biomart.com  Fax: 1-631-938-8127

 45-1 Ramsey Road, Shirley, NY 11967, USA

Form	Freeze-dried powder
Molecular Mass	Predicted Molecular Mass: 29.6kDa
Endotoxin	<1.0EU per 1g (determined by the LAL method)
Purity	>95%
Characteristic	The isoelectric point is 6.8.
Applications	SDS-PAGE; WB; ELISA; IP
Stability	The thermal stability is described by the loss rate. The loss rate was determined by accelerated thermal degradation test, that is, incubate the protein at 37°C for 48h, and no obvious degradation and precipitation were observed. The loss rate is less than 5% within the expiration date under appropriate storage condition.
Storage	Avoid repeated freeze/thaw cycles. Store at 2-8°C for one month. Aliquot and store at -80°C for 12 months.
Storage buffer	Supplied as lyophilized form in PBS, pH7.4, containing 5% trehalose, 0.01% sarcosyl
Reconstitution	Reconstitute in sterile PBS, pH7.2-pH7.4.
GENE INFORMATION	
Gene Name	PDP1 pyruvate dehydrogenase phosphatase catalytic subunit 1 [Homo sapiens (human)]
Official Symbol	PDP1

 Tel: 1-631-559-9269 1-516-512-3133

 Email: info@creative-biomart.com  Fax: 1-631-938-8127

 45-1 Ramsey Road, Shirley, NY 11967, USA

Synonyms

PDH; PDP; PDPC; PPM2A; PPM2C; PDP 1; PDPC 1; [Pyruvate dehydrogenase [acetyl-transferring]]-phosphatase 1, mitochondrial; protein phosphatase 2C, magnesium-dependent, catalytic subunit; protein phosphatase, Mg²⁺/Mn²⁺ dependent 2A; pyruvate dehydrogenase (Lipoamide) phosphatase-phosphatase; pyruvate dehydrogenase phosphatase catalytic subunit 1; pyruvate dehydrogenase phosphatase catalytic subunit 1

Gene ID

54704

mRNA Refseq

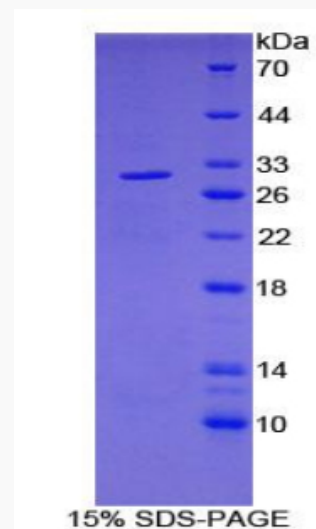
NM_001161779.1

Protein Refseq

NP_001155251.1

UniProt ID

Q9P0J1

SDS-PAGE


Tel: 1-631-559-9269 1-516-512-3133

Email: info@creative-biomart.com Fax: 1-631-938-8127

45-1 Ramsey Road, Shirley, NY 11967, USA