

Recombinant Human PDP1 Protein, His-tagged

Cat. No. PDP1-79H Lot. No. (See product label)

SPECIFICATION

Product Overview	Recombinant Human PDP1 Protein(Ala72-Glu537)(Q9P0J1), fused with C-terminal His tag, was expressed in E. coli.
Species	Human
Source	E.coli
ProteinLength	Ala72-Glu537
Tag	C-His
Form	Phosphate buffered saline.
Molecular Mass	53 kDa
Storage	Store it under sterile conditions at -80°C. It is recommended that the protein be aliquoted for optimal storage. Avoid repeated freeze-thaw cycles.
Reconstitution	It is recommended that sterile water be added to the vial to prepare a stock solution of 0.2 ug/ul. Centrifuge the vial at 4°C before opening to recover the entire contents.
AA Sequence	ASTPQKFYLTTPQVNSILKANEYSFKVPEFDGKNVSSILGFDSNQLPANAPIEDRRSA ATCLQTRGMLLGVFDGHAGCACSQAVSERLFYYIAVSLLPHETLLEIENAVESGRALL PILQWHKHPNDYFSKEASKLYFNLSRITYWQELIDLNTGESTDIDVKEALINAFKRLDN DISLEAQVGD PNSFLNYLVLRVAFSGATACVAHV DGVLDLHVANTGDSRAMLG VQEE

 Tel: 1-631-559-9269 1-516-512-3133

 Email: info@creative-biomart.com  Fax: 1-631-938-8127

 45-1 Ramsey Road, Shirley, NY 11967, USA

DGSWSAVTLSNDHNAQNERELERLKLHHPKSEAKSVVKQDRLLGLLMPFRAFQDVK
 FKWSIDLQKRVIESGPDQLNDNEYTKFIPPNYHTPPYLTAEPEVTYHRLRPQDKFLVL
 ATDGLWETMHRQDVVRIVGEYLTGMHHQQPIAVGGYKVTLGQMHGLLTERRTKMS
 SVFEDQNAATHLIRHAVGNNEFGTVDHERLSKMLSLPEELARMYRDDITIIVVQFNH
 VVGAYQNQE

GENE INFORMATION

Gene Name PDP1 pyruvate dehydrogenase phosphatase catalytic subunit 1 [Homo sapiens]

Official Symbol PDP1

Synonyms PDP1; pyruvate dehydrogenase phosphatase catalytic subunit 1; PDP 1; PDPC 1; [Pyruvate dehydrogenase [acetyl-transferring]]-phosphatase 1, mitochondrial; protein phosphatase 2C, magnesium-dependent, catalytic subunit; pyruvate dehydrogenase (Lipoamide) phosphatase-phosphatase; pyruvate dehydrogenase phosphatase catalytic subunit 1; PDH; PDP; PDPC; PPM2C; FLJ32517; FLJ56179; MGC119646; EC 3.1.3.43

Gene ID 54704

mRNA Refseq NM_001161778

Protein Refseq NP_001155250

MIM 605993

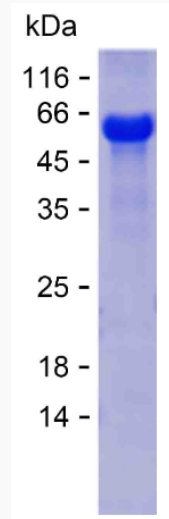
UniProt ID Q9P0J1

 Tel: 1-631-559-9269 1-516-512-3133

 Email: info@creative-biomart.com  Fax: 1-631-938-8127

 45-1 Ramsey Road, Shirley, NY 11967, USA

SDS-PAGE



Lane 1: PDP1-79H; Lane 2: BSA

 Tel: 1-631-559-9269 1-516-512-3133

 Email: info@creative-biomart.com  Fax: 1-631-938-8127

 45-1 Ramsey Road, Shirley, NY 11967, USA