

Recombinant Human PDPK1 Protein, Myc/DDK-tagged, C13 and N15-labeled

Cat. No. PDPK1-4825H Lot. No. (See product label)

SPECIFICATION

Product Overview	PDPK1 MS Standard C13 and N15-labeled recombinant protein (NP_112558) with a C-terminal MYC/DDK tag, was expressed in HEK293 cells.
Species	Human
Source	HEK293
Description	PDPK1 (3-Phosphoinositide Dependent Protein Kinase 1) is a Protein Coding gene. Diseases associated with PDPK1 include Endometrial Cancer and Lung Cancer. Among its related pathways are Common Cytokine Receptor Gamma-Chain Family Signaling Pathways and NGF Pathway. Gene Ontology (GO) annotations related to this gene include transferase activity, transferring phosphorus-containing groups and protein tyrosine kinase activity. An important paralog of this gene is AKT2.
Molecular Mass	48.2 kDa
AA Sequence	MARTTSQLYDAVPIQSSVVLCSPPSPSMVRTQTESSTPPGIPGGSRQGPAMDGTAA EPRPGAGSLQHAQPPPQPRKKRPEDFKFGKILGEGSFSTVVLARELATSREYATRA NSFVGTAQYVSPELLTEKSACKSSDLWALGCIYQLVAGLPPFRAGNEYLIFQKIIKLE YDFPEKFFPKARDLVEKLLVLDATKRLGCEEMEGYGPLKAHPFFESVTWENLHQQT PPKLTAYLPAMSEDDDCYGNYNLLSQFGCMQVSSSSSSSHLSASDTGLPQRSG SNIEQYIHDLSNSFELDLQFSEDEKRLLEKQAGGNPWHQFVENNLILKMGPVDKR KGLFARRRQLLLTEGPHLYYVDPVNVKVLKGEIPWSQELRPEAKNFKTFVHTPNRTY

 Tel: 1-631-559-9269 1-516-512-3133

 Email: info@creative-biomart.com  Fax: 1-631-938-8127

 45-1 Ramsey Road, Shirley, NY 11967, USA

YLMDPGNAHKWCRKIQEVWRQRYQSHPDAAVQTRTRPLEQKLISEEDLAANDILD
YKDDDDKV

Purity > 80% as determined by SDS-PAGE and Coomassie blue staining

Stability Stable for 3 months from receipt of products under proper storage and handling conditions.

Storage Store at -80 centigrade. Avoid repeated freeze-thaw cycles.

Concentration 50 µg/mL as determined by BCA

Storage Buffer 100 mM glycine, 25 mM Tris-HCl, pH 7.3.

GENE INFORMATION

Gene Name [PDPK1 3-phosphoinositide dependent protein kinase-1 \[Homo sapiens \(human\) \]](#)

Official Symbol [PDPK1](#)

Synonyms PDPK1; 3-phosphoinositide dependent protein kinase-1; 3-phosphoinositide-dependent protein kinase 1; PDK1; PkB kinase; PkB-like 1; PkB kinase like gene 1; PRO0461; MGC20087; MGC35290;

Gene ID [5170](#)

mRNA Refseq [NM_031268](#)

Protein Refseq [NP_112558](#)

MIM [605213](#)

 Tel: 1-631-559-9269 1-516-512-3133

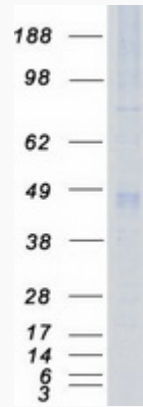
 Email: info@creative-biomart.com  Fax: 1-631-938-8127

 45-1 Ramsey Road, Shirley, NY 11967, USA

UniProt ID

O15530

SDS-PAGE



 Tel: 1-631-559-9269 1-516-512-3133

 Email: info@creative-biomart.com  Fax: 1-631-938-8127

 45-1 Ramsey Road, Shirley, NY 11967, USA