

Active Recombinant Human PDPN protein, Fc-His-tagged

Cat. No. PDPN-2320H Lot. No. (See product label)

SPECIFICATION

Product Overview	Active Recombinant Human PDPN protein(Q86YL7-1) (Met 1-Lys 123) was expressed in HEK293, fused with the C-terminal polyhistidine-tagged Fc region of human IgG1 at the C-terminus.
Species	Human
Source	HEK293
ProteinLength	1-123 aa
Form	Lyophilized from sterile PBS, pH 7.4.
Bio-activity	Measured by its binding ability in a functional ELISA. Immobilized human Podoplanin at 10 µg/mL (100 µl/well) can bind biotinylated human CLEC1B-His, The EC50 of biotinylated human CLEC1B-His is 0.4-1.0 µg/mL.
Molecular Mass	The recombinant human PDPN/Fc chimera is a disulfide-linked homodimer. The reduced monomer comprises 349 amino acids with a predicted molecular mass of 38.6 kDa. As a result of glycosylation, rh PDPN/Fc monomer migrates as an approximately 50-55 kDa band in SDS-PAGE under reducing conditions.
Endotoxin	< 1.0 EU per µg of the protein as determined by the LAL method.
Purity	> 95 % as determined by SDS-PAGE

 Tel: 1-631-559-9269 1-516-512-3133

 Email: info@creative-biomart.com  Fax: 1-631-938-8127

 45-1 Ramsey Road, Shirley, NY 11967, USA

Storage	Store it under sterile conditions at -20°C to -80°C upon receiving. Recommend to aliquot the protein into smaller quantities for optimal storage. Avoid repeated freeze-thaw cycles.
Reconstitution	It is recommended that sterile water be added to the vial to prepare a stock solution of 0.2 ug/ul. Centrifuge the vial at 4°C before opening to recover the entire contents.
protein Refseq-Weblink	http://www.ncbi.nlm.nih.gov/protein/NP_001006625.1
Unit ID	Q86YL7
Unit ID-Weblink	https://www.uniprot.org/uniprotkb/Q86YL7

GENE INFORMATION

Gene Name	PDPN podoplanin [Homo sapiens]
Official Symbol	PDPN
Synonyms	PDPN; podoplanin; aggrus; Gp38; GP40; lung type I cell membrane associated glycoprotein; PA2.26; T1A 2; T1-alpha; hT1alpha-1; hT1alpha-2; PA2.26 antigen; glycoprotein 36; glycoprotein, 36-KD; lung type-I cell membrane-associated glycoprotein (T1A-2); T1A; GP36; OTS8; T1A-2; AGGRUS; HT1A-1;
Gene ID	10630
mRNA Refseq	NM_001006624
protein Refseq	NP_001006625

 Tel: 1-631-559-9269 1-516-512-3133

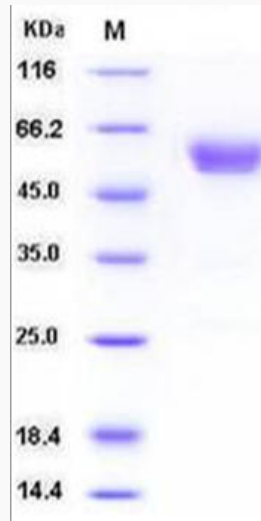
 Email: info@creative-biomart.com  Fax: 1-631-938-8127

 45-1 Ramsey Road, Shirley, NY 11967, USA

MIM

608863

SDS-PAGE



 Tel: 1-631-559-9269 1-516-512-3133

 Email: info@creative-biomart.com  Fax: 1-631-938-8127

 45-1 Ramsey Road, Shirley, NY 11967, USA