

Active Recombinant Human PDPN protein, hFc&His-tagged

Cat. No. PDPN-2706H Lot. No. (See product label)

SPECIFICATION

Product Overview	Active Recombinant Human Podoplanin/PDPN Protein is produced by HEK293 cells expression system. The target protein is expressed with sequence (Glu97–Lys199) of human PDPN/Podoplanin (Accession #NP_006465.3) fused with an Fc, 6xHis tag at the C-terminus.
Species	Human
Source	HEK293
ProteinLength	Glu97–Lys199
Form	Lyophilized from a 0.22 µm filtered solution of PBS, pH 7.4.
Bio-activity	Measured by its binding ability in a functional ELISA. Immobilized Human CLEC-2 Protein at 5 µg/mL (100 µL/well) can bind Human Podoplanin with a linear range of 0.98-46 ng/mL.
Molecular Mass	50-65kDa
Endotoxin	< 0.1 EU/µg of the protein by LAL method.
Purity	> 95% by SDS-PAGE.
Storage	Store the lyophilized protein at -20°C to -80 °C for long term. After reconstitution, the protein solution is stable at -20 °C for 3 months, at 2-8 °C for

 Tel: 1-631-559-9269 1-516-512-3133

 Email: info@creative-biomart.com  Fax: 1-631-938-8127

 45-1 Ramsey Road, Shirley, NY 11967, USA

up to 1 week.

Reconstitution Reconstitute to a concentration of 0.1-0.5 mg/mL in sterile distilled water.

GENE INFORMATION

Gene Name PDPN podoplanin [Homo sapiens]

Official Symbol PDPN

Synonyms PDPN; podoplanin; aggrus; Gp38; GP40; lung type I cell membrane associated glycoprotein; PA2.26; T1A 2; T1-alpha; hT1alpha-1; hT1alpha-2; PA2.26 antigen; glycoprotein 36; glycoprotein, 36-KD; lung type-I cell membrane-associated glycoprotein (T1A-2); T1A; GP36; OTS8; T1A-2; AGGRUS; HT1A-1;

Gene ID 10630

mRNA Refseq NM_001006624

Protein Refseq NP_001006625

MIM 608863

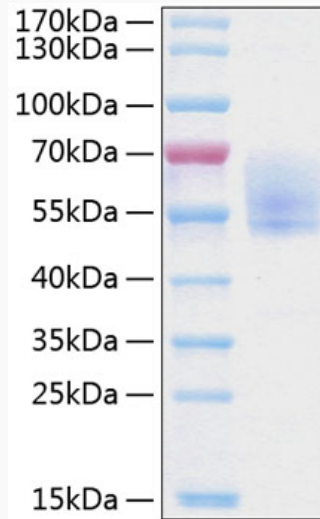
UniProt ID Q86YL7

 Tel: 1-631-559-9269 1-516-512-3133

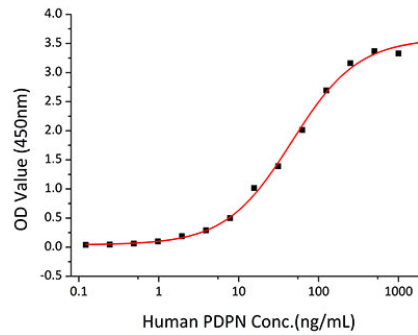
 Email: info@creative-biomart.com  Fax: 1-631-938-8127

 45-1 Ramsey Road, Shirley, NY 11967, USA

SDS-PAGE



Bio-activity



 Tel: 1-631-559-9269 1-516-512-3133

 Email: info@creative-biomart.com  Fax: 1-631-938-8127

 45-1 Ramsey Road, Shirley, NY 11967, USA