

Recombinant Human PDPN Protein (Ala23-Leu131), C-His tagged

Cat. No. PDPN-3915H Lot. No. (See product label)

SPECIFICATION

Product Overview	Recombinant human PDPN (Ala23-Leu131) fused with the C-terminal His tag was expressed in Mammalian cells.
Species	Human
Source	Mammalian Cells
ProteinLength	Ala23-Leu131
Form	Lyophilized powder/frozen liquid
Molecular Mass	11.99 kDa
Purity	>90% as determined by SDS-PAGE.
Notes	For research use only.
Storage	Use a manual defrost freezer and avoid repeated freeze thaw cycles. Store at 2 to 8 centigrade for one week. Store at -20 to -80 centigrade for twelve months from the date of receipt.
Storage Buffer	Supplied as solution form in PBS or lyophilized from PBS.
Reconstitution	Reconstitute in sterile water for a stock solution.

 Tel: 1-631-559-9269 1-516-512-3133

 Email: info@creative-biomart.com  Fax: 1-631-938-8127

 45-1 Ramsey Road, Shirley, NY 11967, USA

Shipping They are shipped out with dry ice/blue ice unless customers require otherwise.

GENE INFORMATION

Gene Name [PDPN podoplanin \[Homo sapiens \(human\) \]](#)

Official Symbol [PDPN](#)

Synonyms PDPN; podoplanin; aggrus; Gp38; GP40; lung type I cell membrane associated glycoprotein; PA2.26; T1A 2; T1-alpha; hT1alpha-1; hT1alpha-2; PA2.26 antigen; glycoprotein 36; glycoprotein, 36-KD; lung type-I cell membrane-associated glycoprotein (T1A-2); T1A; GP36; OTS8; T1A-2; AGGRUS; HT1A-1;

Gene ID [10630](#)

mRNA Refseq [NM_001006624](#)

Protein Refseq [NP_001006625](#)

MIM [608863](#)

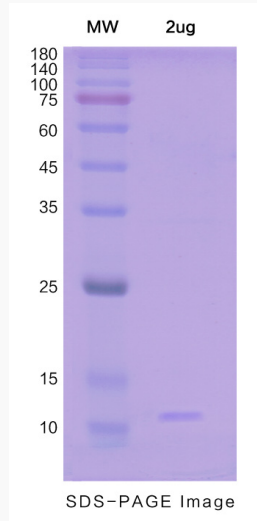
UniProt ID [Q86YL7](#)


 Tel: 1-631-559-9269 1-516-512-3133

 Email: info@creative-biomart.com  Fax: 1-631-938-8127

 45-1 Ramsey Road, Shirley, NY 11967, USA

SDS-PAGE



 Tel: 1-631-559-9269 1-516-512-3133

 Email: info@creative-biomart.com  Fax: 1-631-938-8127

 45-1 Ramsey Road, Shirley, NY 11967, USA