

Recombinant Human PDPN Protein (Ala23-Gly146), N-His tagged

Cat. No. PDPN-3918H Lot. No. (See product label)

SPECIFICATION

Product Overview	Recombinant human PDPN (Ala23-Gly146) fused with the N-His tag was expressed in E. coli.
Species	Human
Source	E.coli
ProteinLength	Ala23-Gly146
Form	Lyophilized powder/frozen liquid
Molecular Mass	14.86 kDa
Purity	>90% as determined by SDS-PAGE.
Notes	For research use only.
Storage	Use a manual defrost freezer and avoid repeated freeze thaw cycles. Store at 2 to 8 centigrade for one week. Store at -20 to -80 centigrade for twelve months from the date of receipt.
Storage Buffer	0.01M PBS, pH 7.4, 0.02% NLS
Reconstitution	Reconstitute in sterile water for a stock solution.

 Tel: 1-631-559-9269 1-516-512-3133

 Email: info@creative-biomart.com  Fax: 1-631-938-8127

 45-1 Ramsey Road, Shirley, NY 11967, USA

Shipping They are shipped out with dry ice/blue ice unless customers require otherwise.

GENE INFORMATION

Gene Name PDPN podoplanin [Homo sapiens (human)]

Official Symbol PDPN

Synonyms PDPN; podoplanin; aggrus; Gp38; GP40; lung type I cell membrane associated glycoprotein; PA2.26; T1A 2; T1-alpha; hT1alpha-1; hT1alpha-2; PA2.26 antigen; glycoprotein 36; glycoprotein, 36-KD; lung type-I cell membrane-associated glycoprotein (T1A-2); T1A; GP36; OTS8; T1A-2; AGGRUS; HT1A-1;

Gene ID 10630

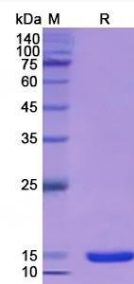
mRNA Refseq NM_001006624

Protein Refseq NP_001006625

MIM 608863

UniProt ID Q86YL7

SDS-PAGE



 Tel: 1-631-559-9269 1-516-512-3133

 Email: info@creative-biomart.com  Fax: 1-631-938-8127

 45-1 Ramsey Road, Shirley, NY 11967, USA