

Recombinant Human PDPN Protein, Fc/Avi-tagged

Cat. No. PDPN-42H Lot. No. (See product label)

SPECIFICATION

Product Overview	Recombinant human PDPN protein (a.a. 23-131) with C-terminal Avi-Tag fused to the Fc portion of Human IgG1 and expressed in a HEK293 cell expression system.
Species	Human
Source	HEK293
ProteinLength	23-131 a.a.
Description	<p>This gene encodes a type-I integral membrane glycoprotein with diverse distribution in human tissues. The physiological function of this protein may be related to its mucin-type character. The homologous protein in other species has been described as a differentiation antigen and influenza-virus receptor. The specific function of this protein has not been determined but it has been proposed as a marker of lung injury. Alternatively spliced transcript variants encoding different isoforms have been identified.</p>
Form	Aqueous buffer solution.
Molecular Mass	40 kDa
Purity	≥90%
Storage	At least 6 months at –80 centigrade.

 Tel: 1-631-559-9269 1-516-512-3133

 Email: info@creative-biomart.com  Fax: 1-631-938-8127

 45-1 Ramsey Road, Shirley, NY 11967, USA

Storage Buffer 8 mM Phosphate, pH 7.4, 110 mM NaCl, 2.2 mM KCl, and 20% glycerol.

Shipping At -80 centigrade.

GENE INFORMATION

Gene Name PDPN podoplanin [Homo sapiens (human)]

Official Symbol PDPN

Synonyms

PDPN; podoplanin; T1A; GP36; GP40; Gp38; OTS8; T1A2; TI1A; D2-40; T1A-2; AGGRUS; HT1A-1; PA2.26; podoplanin; PA2.26 antigen; T1-alpha; glycoprotein 36; glycoprotein, 36-KD; hT1alpha-1; hT1alpha-2; lung type I cell membrane associated glycoprotein; lung type-I cell membrane-associated glycoprotein (T1A-2)

Gene ID 10630

mRNA Refseq NM_006474

Protein Refseq NP_006465

MIM 608863

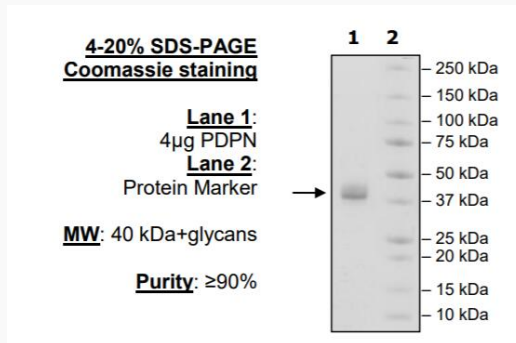
UniProt ID Q86YL7

 Tel: 1-631-559-9269 1-516-512-3133

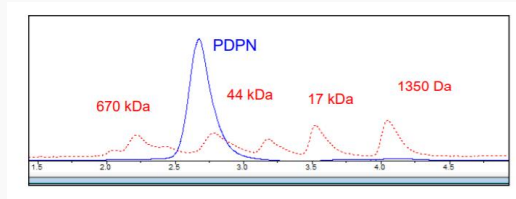
 Email: info@creative-biomart.com  Fax: 1-631-938-8127

 45-1 Ramsey Road, Shirley, NY 11967, USA

SDS-PAGE



Gel Filtration Curve



<10 % Aggregation

 Tel: 1-631-559-9269 1-516-512-3133

 Email: info@creative-biomart.com  Fax: 1-631-938-8127

 45-1 Ramsey Road, Shirley, NY 11967, USA